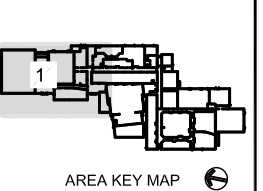
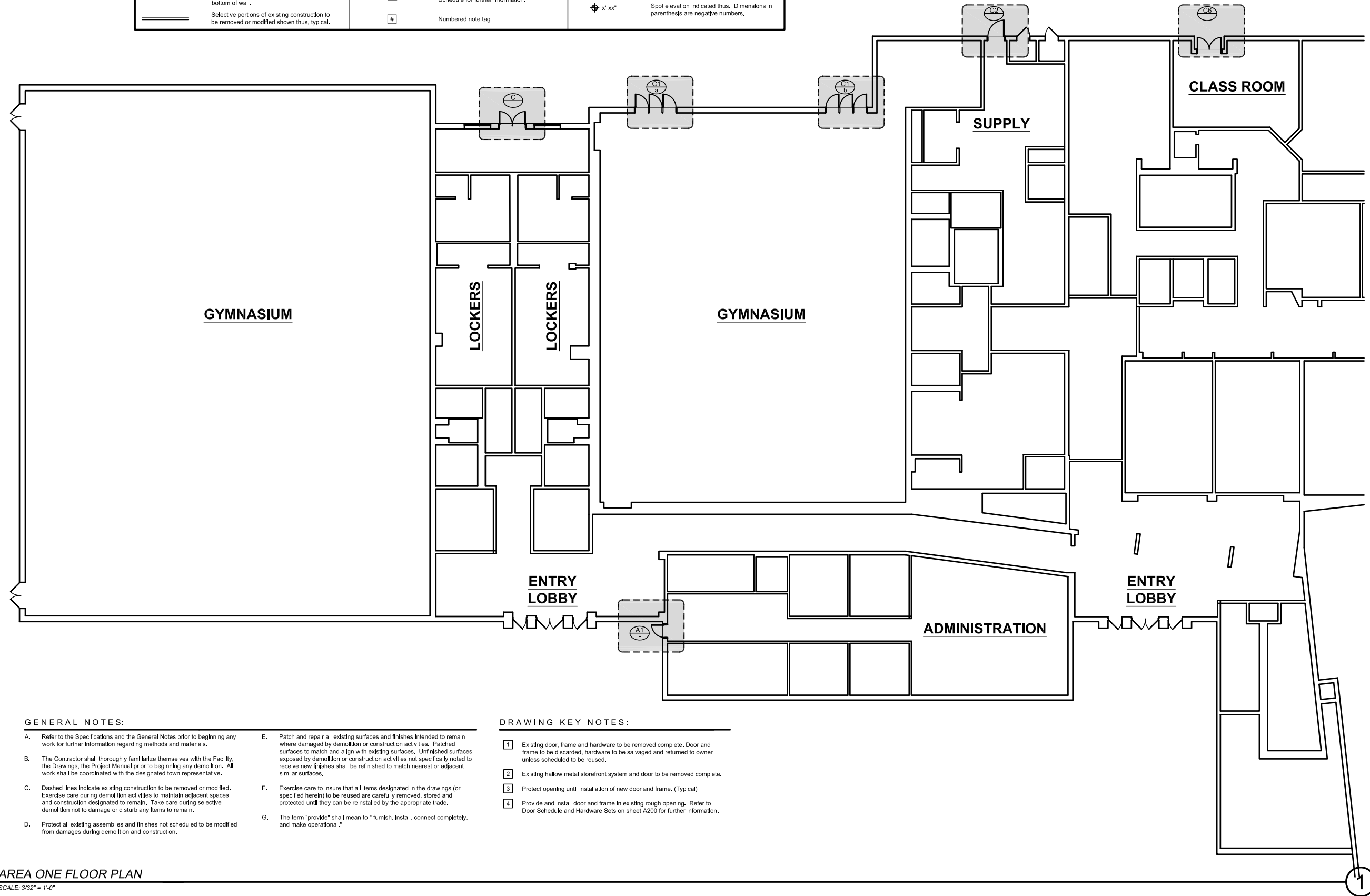


LEGEND					
	Existing door and frame to remain shown thus, typical.		Detail No.		Wall Type Indicator
	New door, frame and wall shown thus, typical.		Interior Elevation Flag		Denotes dimension from face of framing to face of framing or face of existing finished surface unless specifically noted otherwise.
	Existing partition to remain, patch and repair as necessary to prepare surface for new finishes scheduled.		Door No.		Denotes dimension between two centerlines.
	Hatch indicates portion of wall to be firestopped at all penetrations and top and bottom of wall.		Room No.		Spot elevation indicated thus. Dimensions in parenthesis are negative numbers.
	Selective portions of existing construction to be removed or modified shown thus, typical.		Frame Tag, refer to Door and Frame Schedule for further information.		Numbered note tag



East Granby High School
Exterior Door Replacement
95 SOUTH MAIN STREET
EAST GRANBY, CT 06026

MAIER design group, llc.
architecture & interiors

34 Sequassen Street, Hartford, CT 06106
Tel: 860.293.0093 / Fax: 860.293.0094

**AREA ONE
PARTIAL PLAN**

Project Number: 2024.013	Issue Date: May 13 2024 PROG.
Scale: AS NOTED	CAD File: 24013_A101
Drawn By: map	Checked By: EAL

Revisions:

A101

- GENERAL NOTES:**
- A. Refer to the Specifications and the General Notes prior to beginning any work for further information regarding methods and materials.
 - B. The Contractor shall thoroughly familiarize themselves with the Facility, the Drawings, the Project Manual prior to beginning any demolition. All work shall be coordinated with the designated town representative.
 - C. Dashed lines indicate existing construction to be removed or modified. Exercise care during demolition activities to maintain adjacent spaces and construction designated to remain. Take care during selective demolition not to damage or disturb any items to remain.
 - D. Protect all existing assemblies and finishes not scheduled to be modified from damages during demolition and construction.
 - E. Patch and repair all existing surfaces and finishes intended to remain where damaged by demolition or construction activities. Patched surfaces to match and align with existing surfaces. Unfinished surfaces exposed by demolition or construction activities not specifically noted to receive new finishes shall be refinished to match nearest or adjacent similar surfaces.
 - F. Exercise care to insure that all items designated in the drawings (or specified herein) to be reused are carefully removed, stored and protected until they can be reinstalled by the appropriate trade.
 - G. The term "provide" shall mean to "furnish, install, connect completely, and make operational."

- DRAWING KEY NOTES:**
- 1 Existing door, frame and hardware to be removed complete. Door and frame to be discarded, hardware to be salvaged and returned to owner unless scheduled to be reused.
 - 2 Existing hollow metal storefront system and door to be removed complete.
 - 3 Protect opening until installation of new door and frame, (Typical)
 - 4 Provide and install door and frame in existing rough opening. Refer to Door Schedule and Hardware Sets on sheet A200 for further information.

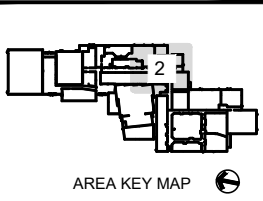
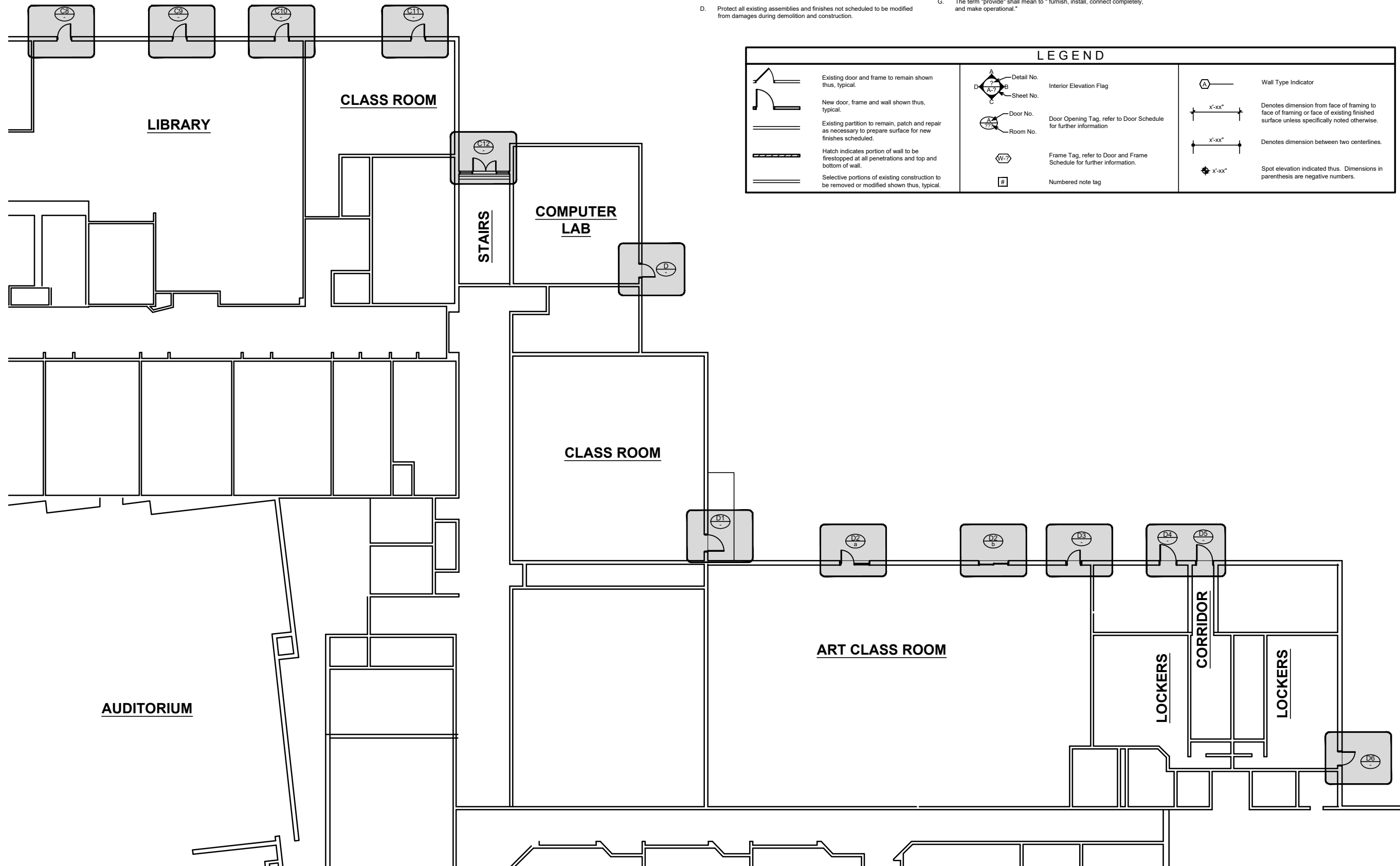
AREA ONE FLOOR PLAN
SCALE: 3/32" = 1'-0"

GENERAL NOTES:

- A. Refer to the Specifications and the General Notes prior to beginning any work for further information regarding methods and materials.
- B. The Contractor shall thoroughly familiarize themselves with the Facility, the Drawings, the Project Manual prior to beginning any demolition. All work shall be coordinated with the designated town representative.
- C. Dashed lines indicate existing construction to be removed or modified. Exercise care during demolition activities to maintain adjacent spaces and construction designated to remain. Take care during selective demolition not to damage or disturb any items to remain.
- D. Protect all existing assemblies and finishes not scheduled to be modified from damages during demolition and construction.
- E. Patch and repair all existing surfaces and finishes intended to remain where damaged by demolition or construction activities. Patched surfaces to match and align with existing surfaces. Unfinished surfaces exposed by demolition or construction activities not specifically noted to receive new finishes shall be refinished to match nearest or adjacent similar surfaces.
- F. Exercise care to insure that all items designated in the drawings (or specified herein) to be reused are carefully removed, stored and protected until they can be reinstalled by the appropriate trade.
- G. The term "provide" shall mean to "furnish, install, connect completely, and make operational."

DRAWING KEY NOTES:

- 1 Existing door, frame and hardware to be removed complete. Door and frame to be discarded, hardware to be salvaged and returned to owner unless scheduled to be reused.
- 2 Existing hollow metal storefront system and door to be removed complete.
- 3 Protect opening until installation of new door and frame. (Typical)
- 4 Provide and install door and frame in existing rough opening. Refer to Door Schedule and Hardware Sets on sheet A200 for further information.



East Granby High School
Exterior Door Replacement
95 SOUTH MAIN STREET
EAST GRANBY, CT 06026

MAIER design group, llc.
architecture & interiors

34 Sequassen Street, Hartford, CT 06106
Tel: 860.293.0093 / Fax: 860.293.0094

AREA TWO PARTIAL PLAN

Project Number: 2024.013
Issue Date: May 13 2024 PROG.
Scale: AS NOTED
CAD File: 24013_A101
Drawn By: map
Checked By: EAL

Revisions:

AREA TWO FLOOR PLAN
SCALE: 3/32" = 1'-0"

1

← A102

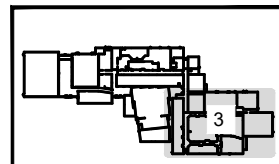
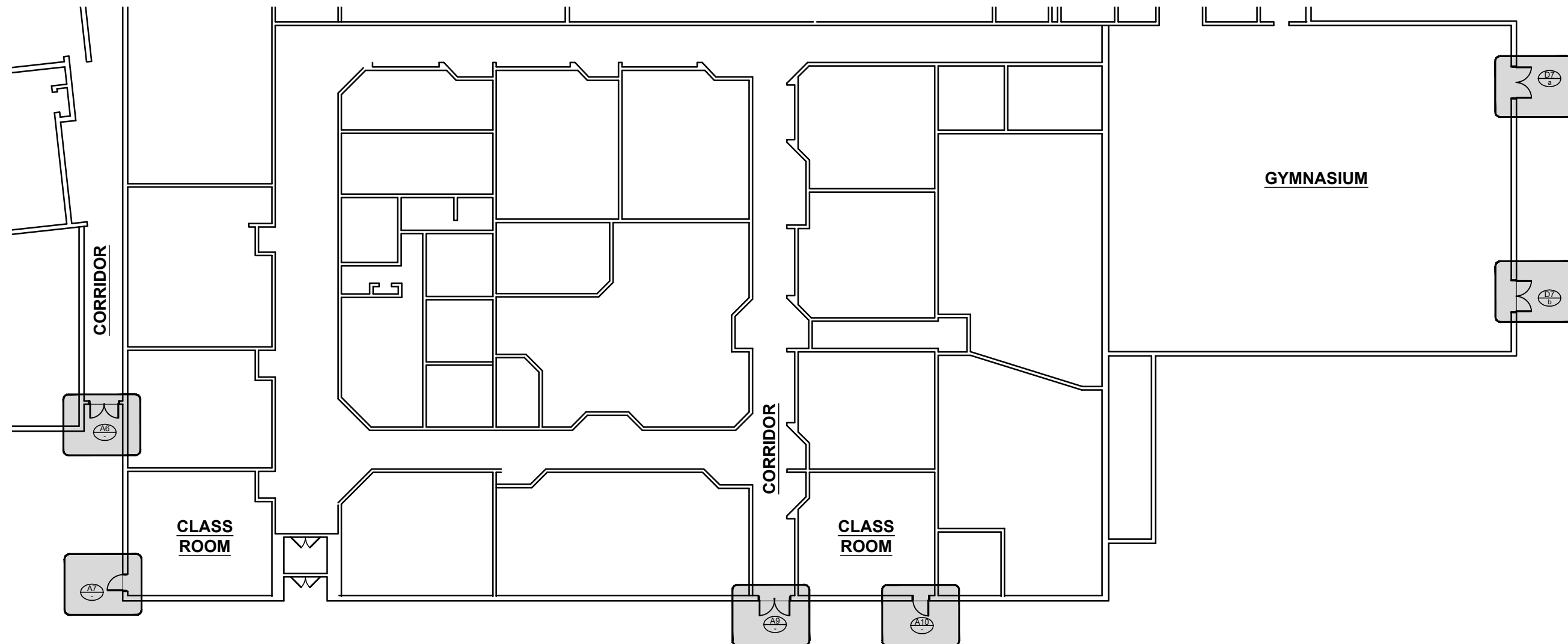
GENERAL NOTES:

- A. Refer to the Specifications and the General Notes prior to beginning any work for further information regarding methods and materials.
- B. The Contractor shall thoroughly familiarize themselves with the Facility, the Drawings, the Project Manual prior to beginning any demolition. All work shall be coordinated with the designated town representative.
- C. Dashed lines indicate existing construction to be removed or modified. Exercise care during demolition activities to maintain adjacent spaces and construction designated to remain. Take care during selective demolition not to damage or disturb any items to remain.
- D. Protect all existing assemblies and finishes not scheduled to be modified from damages during demolition and construction.
- E. Patch and repair all existing surfaces and finishes intended to remain where damaged by demolition or construction activities. Patched surfaces to match and align with existing surfaces. Unfinished surfaces exposed by demolition or construction activities not specifically noted to receive new finishes shall be refinished to match nearest or adjacent similar surfaces.
- F. Exercise care to insure that all items designated in the drawings (or specified herein) to be reused are carefully removed, stored and protected until they can be reinstalled by the appropriate trade.
- G. The term "provide" shall mean to "furnish, install, connect completely, and make operational."

DRAWING KEY NOTES:

- 1 Existing door, frame and hardware to be removed complete. Door and frame to be discarded, hardware to be salvaged and returned to owner unless scheduled to be reused.
- 2 Existing hollow metal storefront system and door to be removed complete.
- 3 Protect opening until installation of new door and frame. (Typical)
- 4 Provide and install door and frame in existing rough opening. Refer to Door Schedule and Hardware Sets on sheet A200 for further information.

LEGEND					
	Existing door and frame to remain shown thus, typical.		Interior Elevation Flag		Wall Type Indicator
	New door, frame and wall shown thus, typical.		Door Opening Tag, refer to Door Schedule for further information		Denotes dimension from face of framing to face of existing finished surface unless specifically noted otherwise.
	Existing partition to remain, patch and repair as necessary to prepare surface for new finishes scheduled.		Frame Tag, refer to Door and Frame Schedule for further information.		Denotes dimension between two centerlines.
	Hatch indicates portion of wall to be firestopped at all penetrations and top and bottom of wall.		Numbered note tag		Spot elevation indicated thus. Dimensions in parenthesis are negative numbers.
	Selective portions of existing construction to be removed or modified shown thus, typical.				



AREA KEY MAP

East Granby High School
Exterior Door Replacement
95 SOUTH MAIN STREET
EAST GRANBY, CT 06026



34 Sequassen Street, Hartford, CT 06106
Tel: 860.293.0093 / Fax: 860.293.0094

AREA THREE FLOOR PLAN

Project Number: 2024.013	Issue Date: May 13 2024 PROG.
Scale: AS NOTED	CAD File: 24013_A101
Drawn By: map	Checked By: EAL

Revisions:

AREA THREE FLOOR PLAN
SCALE: 3/32" = 1'-0"

1

← A103

DOOR SCHEDULE - EAST GRANBY H.S.

Area One

Door Tag	Location	Elevation	Width (W)	Height (H)	Material	Door Finish	Frame Type	Jamb Detail	Head Detail	Frame Finish	Hardware	Function	Rating	Notes
A1	Main Office	DR-1			STEEL	PAINT	FR-1	1 / A201	1 / A201	PAINT			N/A	
C	Vestibule (Gymnasiums)	DR-7			STEEL/GLASS	PAINT	FR-5	1 / A201	2 / A201	PAINT			N/A	MATCHED PAIR
C1a	Gymnasium 2	DR-2			STEEL/GLASS	PAINT	FR-6	1 / A201	1 / A201	PAINT			N/A	TRIPLE DOOR CONFIG.
C1b	Gymnasium 2	DR-2			STEEL/GLASS	PAINT	FR-6	1 / A201	1 / A201	PAINT			N/A	TRIPLE DOOR CONFIG.
C2	Supply	DR-1			STEEL	PAINT	FR-1	1 / A201	1 / A201	PAINT			N/A	
C6	Corridor	DR-5			STEEL	PAINT	FR-4	1 / A201	1 / A201	PAINT			N/A	MATCHED PAIR

Area Two

C8	Library	DR-1			STEEL	PAINT	FR-1	1 / A201	1 / A201	PAINT			N/A	
C9	Library	DR-1			STEEL	PAINT	FR-1	1 / A201	1 / A201	PAINT			N/A	
C10	Library	DR-1			STEEL	PAINT	FR-1	1 / A201	1 / A201	PAINT			N/A	
C11	Classroom	DR-1			STEEL	PAINT	FR-1	1 / A201	1 / A201	PAINT			N/A	
C12	Corridor (2 Stories)	DR-7			ALUM / GLASS	ANODIZED	FR-8	16 / A201	10 / A201	ANODIZED			N/A	ATRIUM SEE 3 / A200
D	Maintenance Shop	DR-1			STEEL	PAINT	FR-1	1 / A201	1 / A201	PAINT			N/A	
D1	Tech Ed.	DR-1			STEEL	PAINT	FR-1	1 / A201	1 / A201	PAINT			N/A	
D2a	Art	DR-8			ALUM / GLASS	ANODIZED	FR-7a	9 / A201	9 / A201	ANODIZED			N/A	HM STEEL RO FRAME
D2b	Art	-			-	-	FR-7b	14 / A201	11 / A201	ANODIZED			N/A	HM STEEL RO FRAME
D3	Art	DR-4			STEEL/GLASS	PAINT	FR-1	1 / A201	1 / A201	PAINT			N/A	
D4	Supply	DR-1			STEEL	PAINT	FR-1	1 / A201	1 / A201	PAINT			N/A	
D5	Supply	DR-1			STEEL	PAINT	FR-1	1 / A201	1 / A201	PAINT			N/A	
D6	Locker	DR-1			STEEL	PAINT	FR-1	1 / A201	1 / A201	PAINT			N/A	

Area Three

D7	Gymnasium (middle)	DR-5			STEEL	PAINT	FR-4	1 / A201	1 / A201	PAINT			N/A	MATCHED PAIR
D7	Gymnasium (middle)	DR-5			STEEL	PAINT	FR-4	1 / A201	1 / A201	PAINT			N/A	MATCHED PAIR
A10	Classroom	DR-1			STEEL	PAINT	FR-1	1 / A201	1 / A201	PAINT			N/A	
A9	Corridor	DR-5			STEEL	PAINT	FR-4	1 / A201	1 / A201	PAINT			N/A	MATCHED PAIR
A7	Classroom	DR-1			STEEL	PAINT	FR-1	1 / A201	1 / A201	PAINT			N/A	
A6	Corridor	DR-6			STEEL/GLASS	PAINT	FR-4	1 / A201	1 / A201	PAINT			N/A	MATCHED PAIR

AREA ONE

DOOR A1:

Solid HM door

Interior - Lever action handle; Electronic code pad; Overhead pneumatic closer; Kick plate; Aluminum threshold.

Exterior: Door sweep; Continuous hinge; Lever action handle with Keyed mortise; Electronic code pad



DOOR C: (double door)

Two panel glass HM doors with transom above

Interior - Emg exit crash bar (each side); Overhead pneumatic closers (both sides); Kick plates; Aluminum threshold.

Exterior: Door sweeps; Continuous hinges; Lever action handle with Keyed mortise (one side); Electronic code pad (one side) Aluminum 'U' handle (one side); Electronic code pad (in-adjacent wall)



DOOR C1a: (triple door)

Single vert. glass vision panel HM door (each)

Interior - Emg exit crash bars (on each); Overhead pneumatic closer with electronic release sensor(alarm?); Kick plate; Aluminum threshold.

Exterior: Door sweep; Continuous hinge; overhead drip edge



DOOR C1b: (triple door)

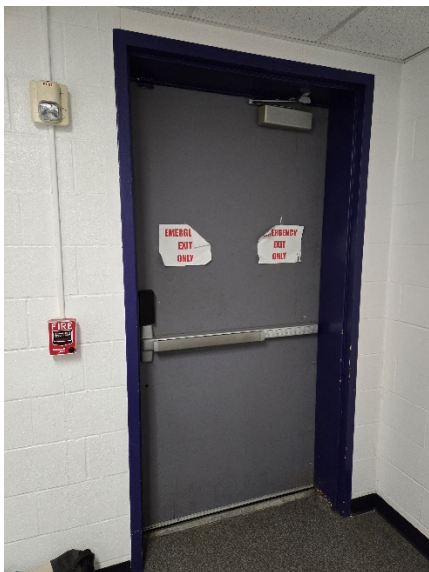
Same as door C1a above

DOOR C2:

Solid HM door

Interior - Emg exit crash bar; Overhead pneumatic closer with electronic release sensor(alarm?); Aluminum threshold.

Exterior: Door sweep; Continuous hinge; Lever action handle with Keyed mortise and electronic code pad

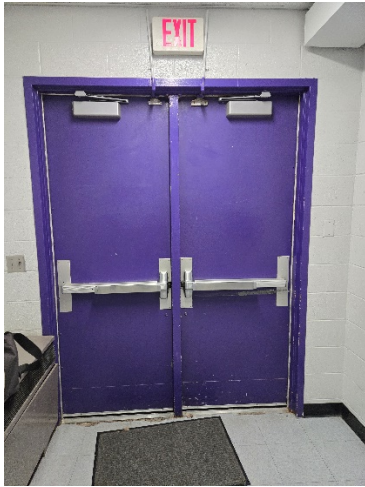


DOOR C6: (double door)

Solid HM door

Interior - Emg exit crash bar (each side); Overhead pneumatic closer with electronic release sensor (both sides) (alarm?); Kick plates; Aluminum threshold.

Exterior: Door sweeps; Continuous hinges; Handle-less keyed mortise plate (both sides) (plate and cylinder are painted over)



AREA TWO

DOOR C8:

Solid HM door

Interior - Emg exit crash bar; Overhead pneumatic closer with electronic release sensor(alarm?); Aluminum threshold;

Exterior: Door sweep; Continuous hinge;(No handle or key cylinder on the outside)



DOOR C9:

Solid HM door

Interior - Emg exit crash bar; Overhead pneumatic closer with electronic release sensor(alarm?); Aluminum threshold;

Exterior: Door sweep; 1 half pair hinges; (No handle or key cylinder on the outside)

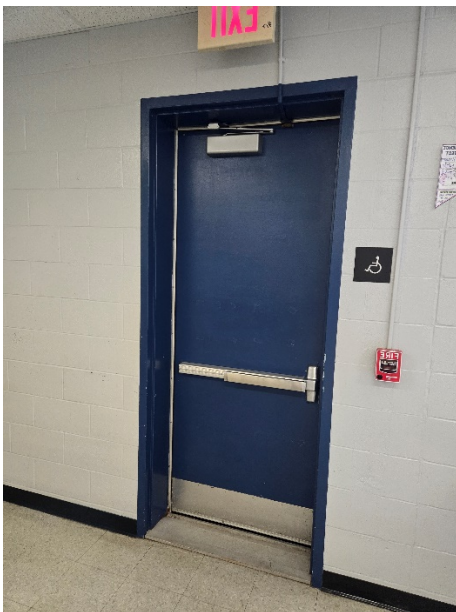


DOOR C10:

Solid HM door

Interior - Emg exit crash bar; Overhead closer with electronic release sensor(alarm?); Aluminum threshold;

Exterior: Door sweep; 1 half pair hinges;(No handle or key cylinder on the outside); Mortise strike security plate



DOOR C11:

Solid HM door

Interior - Emg exit crash bar; Overhead closer with electronic release sensor(alarm?);
Aluminum threshold;

Exterior: Door sweep; 1 half pair hinges; (No handle or key cylinder on the outside);
Mortise strike security plate



DOOR C12: (double door & asymmetrical)

Two panel glass ALUM doors with sidelights & 2 story transom above

Interior - Emg exit crash bar (each side); Overhead closers (both sides); Kick plates;
Aluminum threshold.

Exterior: Door sweeps; Continuous hinges; Lever action handle with Keyed mortise (one side);
Electronic code pad (same side); Aluminum 'U' handle (one side)



DOOR D:

Solid HM door

Interior - Emg exit crash bar; Overhead closer with electronic release sensor(alarm?);

Aluminum threshold;

Exterior: Door sweep; Continuous hinge; Drip edge;

(No handle or key cylinder on the outside)



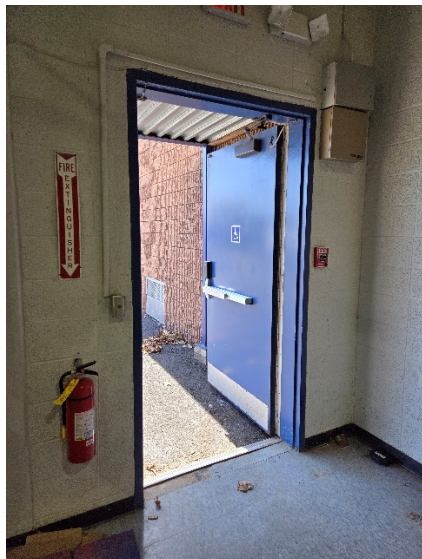
DOOR D1:

Solid HM door

Interior: Overhead closer with electronic release sensor(alarm?);

Kick plates; Aluminum threshold.

Exterior: Door sweep; Continuous hinge; Lever action handle with Keyed mortise; Electronic code pad; Electronic code pad (in-adjacent wall)



DOOR D2a:

Two panel glass ALUM door with strike side sidelight

Interior – Emg exit crash bar (each side); Overhead closer; Lever action handle; Kick plates; Aluminum threshold.

Exterior: Door sweeps; 1 half pair hinges; Lever action handle



DOOR DR D2b:

Sliding panel ALUM door with stationary sidelight

Interior: Pipe rail guard mtd. to masonry jams; Pull-down shade

Exterior: Handle plate (door rendered inoperable)



DOOR D3:

Solid HM door with full upper vision panel (wire glass)

Interior: Emg exit crash bar; Overhead closer with electronic release sensor(alarm?); Aluminum threshold.

Exterior: Door sweep; Continuous hinge; Lever action handle with Keyed mortise and electronic code pad; Electronic camera intercom pad (in-adjacent wall)



DOOR D4:

Solid HM door

Interior: Overhead closer; Knob passage handle; Kick plates; Aluminum threshold.

Exterior: Door sweep; Continuous hinge; knob handle with Keyed mortise; Mortise strike security plate



DOOR C5:

Solid HM door

Interior: Emg exit crash bar; Overhead closer with electronic release sensor(alarm?); Aluminum threshold; Kick Plate.

Exterior: Door sweep; Continuous hinge; Mortise strike security plate; Continuous perimeter door seal.

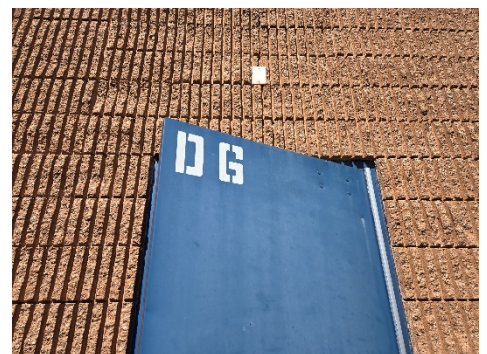
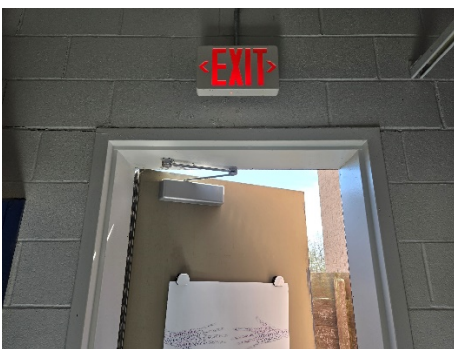


DOOR C6:

Solid HM door

Interior: Emg exit crash bar; Overhead closer; Aluminum threshold.

Exterior: Door sweep; Continuous hinge; Lever action handle with Keyed mortise; electronic code pad.



AREA THREE

DOOR D7a: (double door)

Solid HM door

Interior – Emg exit crash bar (each side); Overhead closer; Kick plates; Aluminum threshold;
Center keyed astragal

Exterior: Door sweeps; Continuous hinges; Continuous perimeter door seal.



DOOR D7b: (double door)

Same as door D7a above *(no exterior operational hardware)



DOOR A10:

Solid HM door

Interior: Emg exit crash bar; Overhead closer with electronic release sensor(alarm?); Kick Plate; Aluminum threshold.

Exterior: Door sweep; 1 half pair hinges; Pull handle with thumb latch and Keyed mortise; Perimeter continuous door seal.



DOOR D9: (double door)

Solid HM door

Interior – Emg exit crash bar (each side); Overhead closer with electronic release sensor(alarm?); Aluminum threshold; Center astragal

Exterior: Door sweeps; 1 half pair hinges (each side); Continuous perimeter door seal; Lever action handle with Keyed mortise; electronic code pad (one side); Lever action handle with Keyed mortise (one side).



DOOR A7:

Solid HM door

Interior: Lever action handle; Overhead closer with electronic release sensor(alarm?); Aluminum threshold; Kick Plate.

Exterior: Door sweep; Continuous hinge; Lever action handle with Keyed mortise; electronic code pad; Continuous perimeter door seal; Mortise strike security plate.



DOOR A6: (double door)

Solid HM door with narrow vision panel (each door)

Interior – Emg exit crash bar (each side); Overhead closer with electronic release sensor(alarm?); Aluminum threshold; Center astragal; Kick plates.

Exterior: Door sweeps; Continuous hinge (each side); Continuous perimeter door seal; No exterior operational hardware.

