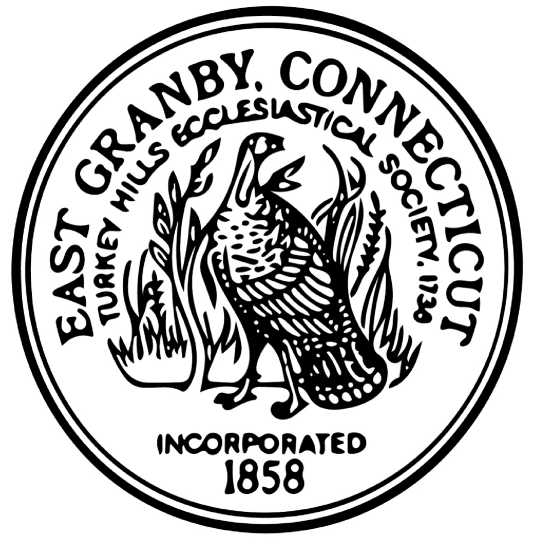
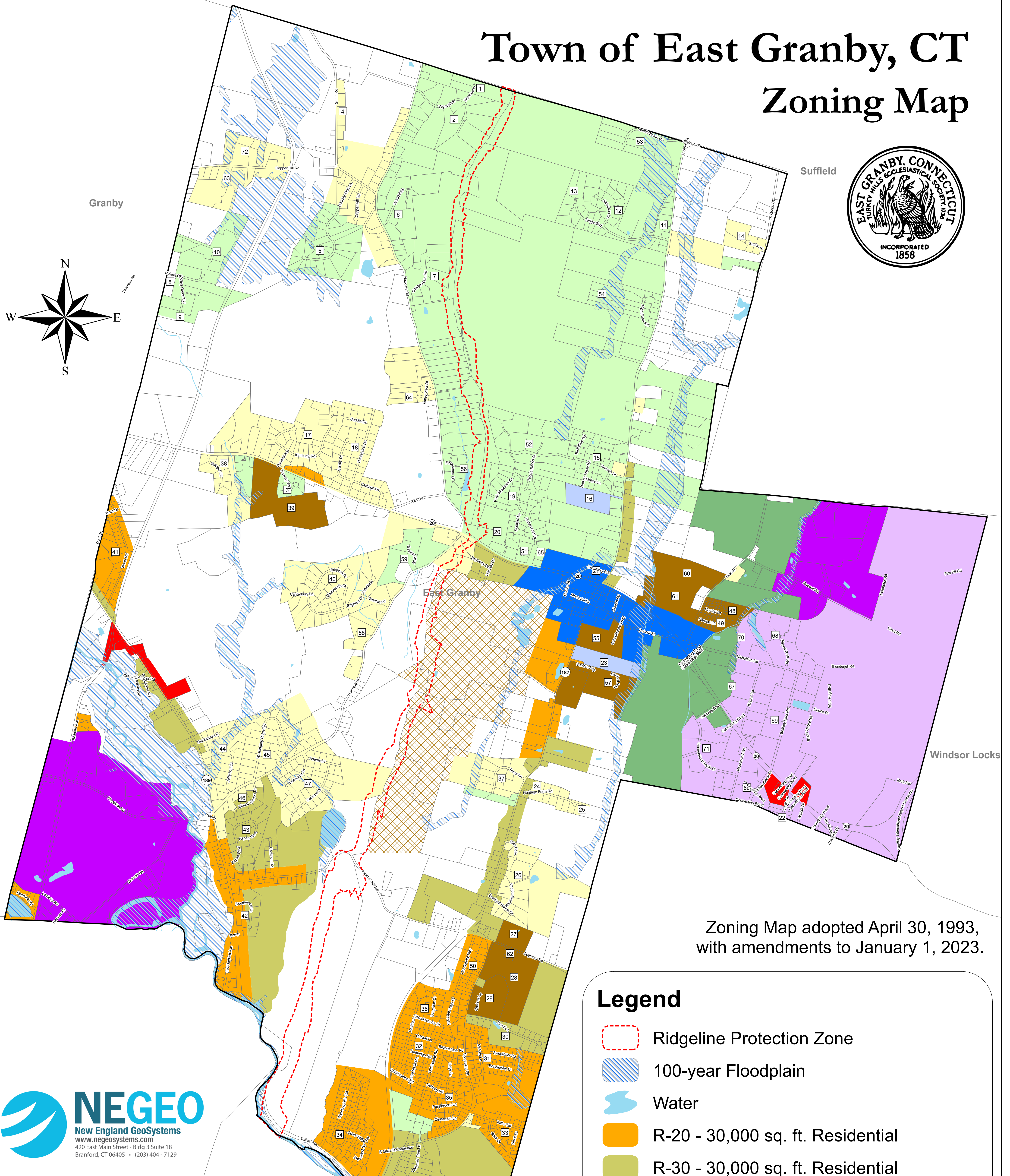
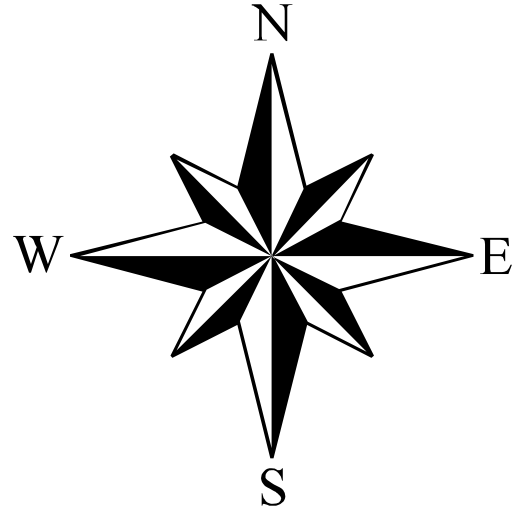


Town of East Granby, CT Zoning Map



Suffield

Granby



Zoning Map adopted April 30, 1993,
with amendments to January 1, 2023.



Subdivisions

- | | |
|---|---|
| 1 - Wyncourte | 37 - Golden Oaks a.k.a. Golan Heights |
| 2 - Wyncairne | 38 - Granger Circle |
| 3 - Waverly Heights a.k.a. Turkey Hill Court | 39 - Turkey Hill Apts |
| 4 - Copper Hill Chase | 40 - Brentwood |
| 5 - Copper Meadow a.k.a. Country Club Estates or Holliswood | 41 - Salmon Brook Estates |
| 6 - Woodledge | 42 - Southwood |
| 7 - Copper Gate | 43 - Aspenrise a.k.a. Konstin Place |
| 8 - Rolling Green | 44 - Holcomb Farms |
| 9 - Rolling Green Extension | 45 - Holcomb Farms II |
| 10 - Rolling Green North a.k.a. Black Bear Run | 46 - Talcott Heights |
| 11 - The Ridge - Phase 1 | 47 - Heather Hollow |
| 12 - The Ridge - Phase 2 | 48 - Crystal Farms |
| 13 - The Ridge - Phase 4 | 49 - Crystal Farms II |
| 14 - Sutton Place | 50 - Sunrise Meadow |
| 15 - East Granby Estates | 51 - Metacomet Views II |
| 16 - Metacomet Village | 52 - The Woodlands |
| 17 - Newgate Farms | 53 - Austin Brook Estates |
| 18 - Golden Hills | 54 - Highwood Farms |
| 19 - Old Newgate Ridge | 55 - Schoolhouse Landing |
| 20 - Peak Mountain Estates | 56 - Fieldstone Farms |
| 21 - Creamery Brook Office Park | 57 - Sanford Ranch |
| 22 - Pine Acres | 58 - Cedar Rock a.k.a. Wimpfheimer Subdivision |
| 23 - Higley Village | 59 - Phelps Settlement |
| 24 - Heritage Farms | 60 - Bramble Bush Village |
| 25 - Heritage Acres | 61 - East Granby Meadows |
| 26 - Eastfield Farms | 62 - Courtyard |
| 27 - Quincewood | 63 - Griffin South |
| 28 - Granby Village | 64 - Valley View |
| 29 - Chelsea Commons | 65 - Metacomet Views |
| 30 - Pond Meadow | 66 - Hazelwood Industrial Park a.k.a. New England Tradeport |
| 31 - Melody Acres East | 67 - Airport Business Center |
| 32 - Melody Acres West | 68 - Airport Park Road |
| 33 - Radio Range | 69 - Bradley Park Road Industrial Park |
| 34 - Wynding Hills | 70 - East Side Industrial Park |
| 35 - Nutmeg Hills | 71 - Newgate International Business Center |
| 36 - Huckleberry Hills | 72 - Griffin North |

Legend

- Ridgeline Protection Zone
- 100-year Floodplain
- Water
- R-20 - 30,000 sq. ft. Residential
- R-30 - 30,000 sq. ft. Residential
- R-40 - 40,000 sq. ft. Residential
- PRD - Planned Residential Development
- MFDR - Multi-Family Designed Residence
- EH - Elderly Housing
- V - Village District
- B - Business
- CPT - Commerce Park Transition
- CP-A - Commerce Park A
- CP-B - Commerce Park B
- Q - Quarry

Suffield

Map Produced January 2025

Parcels as of September 2024
Hydrography from CT DEEP 2014

DISCLAIMER:

This map is for informational purposes only. All information is subject to verification by any user. The Town of East Granby and its mapping contractors assumes no legal responsibility for the information contained herein.

1

Miles

Windsor Locks