

Infiltration / Inflow Analysis

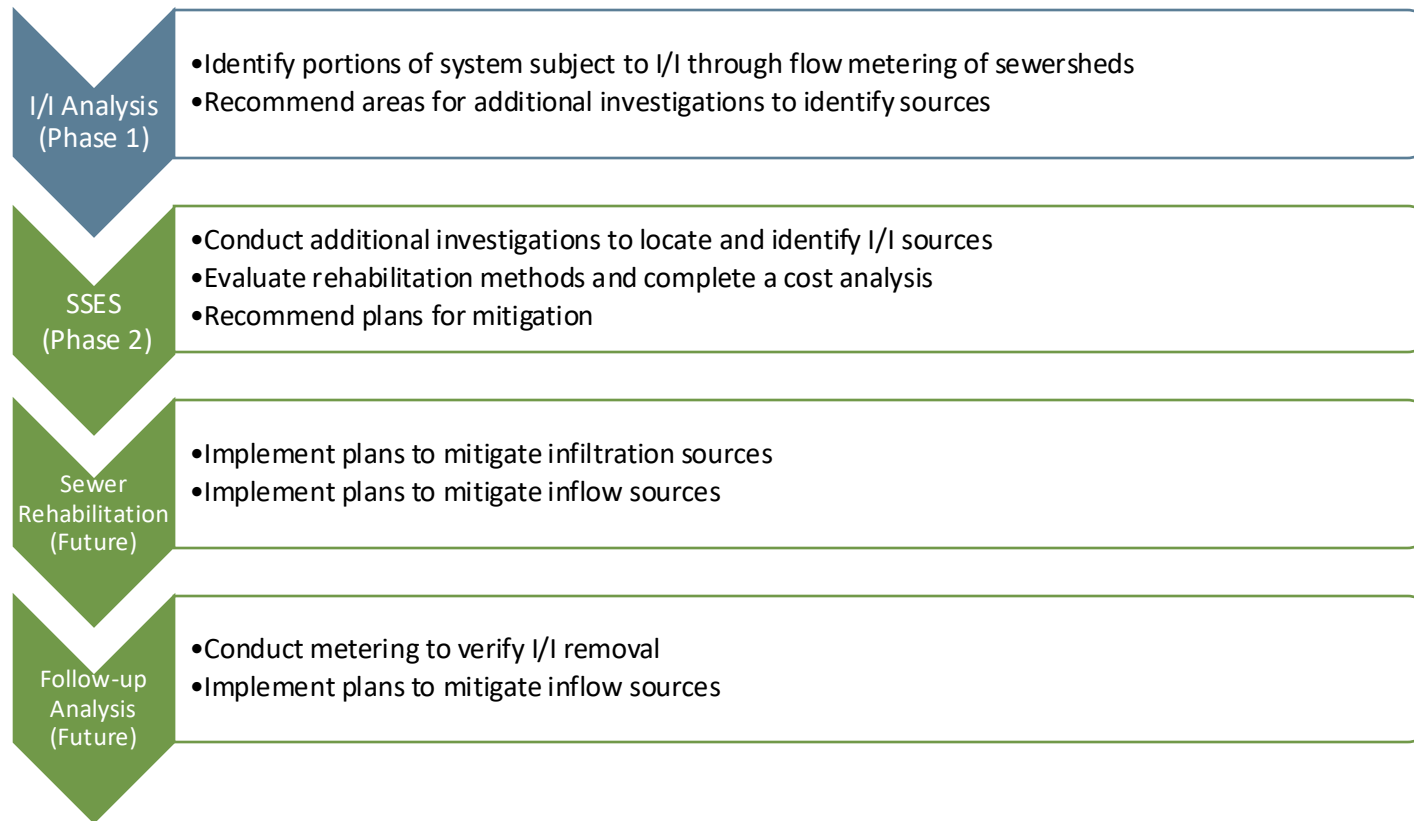
East Granby, CT

January 22, 2025



Sewer System Evaluation

Regulatory Approved Approach



Infiltration

- Groundwater that enters the sewer collection system
 - Faulty Pipe Joints
 - Cracks in pipe
 - Structurally impaired sewer manholes



Structurally Sound Pipe



Cracks in Pipe



Offset Joint

Inflow

- **Stormwater (rainwater) that enters the sewer collection system**
 - Illicit Connections
 - Sump Pumps
 - Drainage Infrastructure
 - Roof Leaders
 - Sewer Manhole Covers

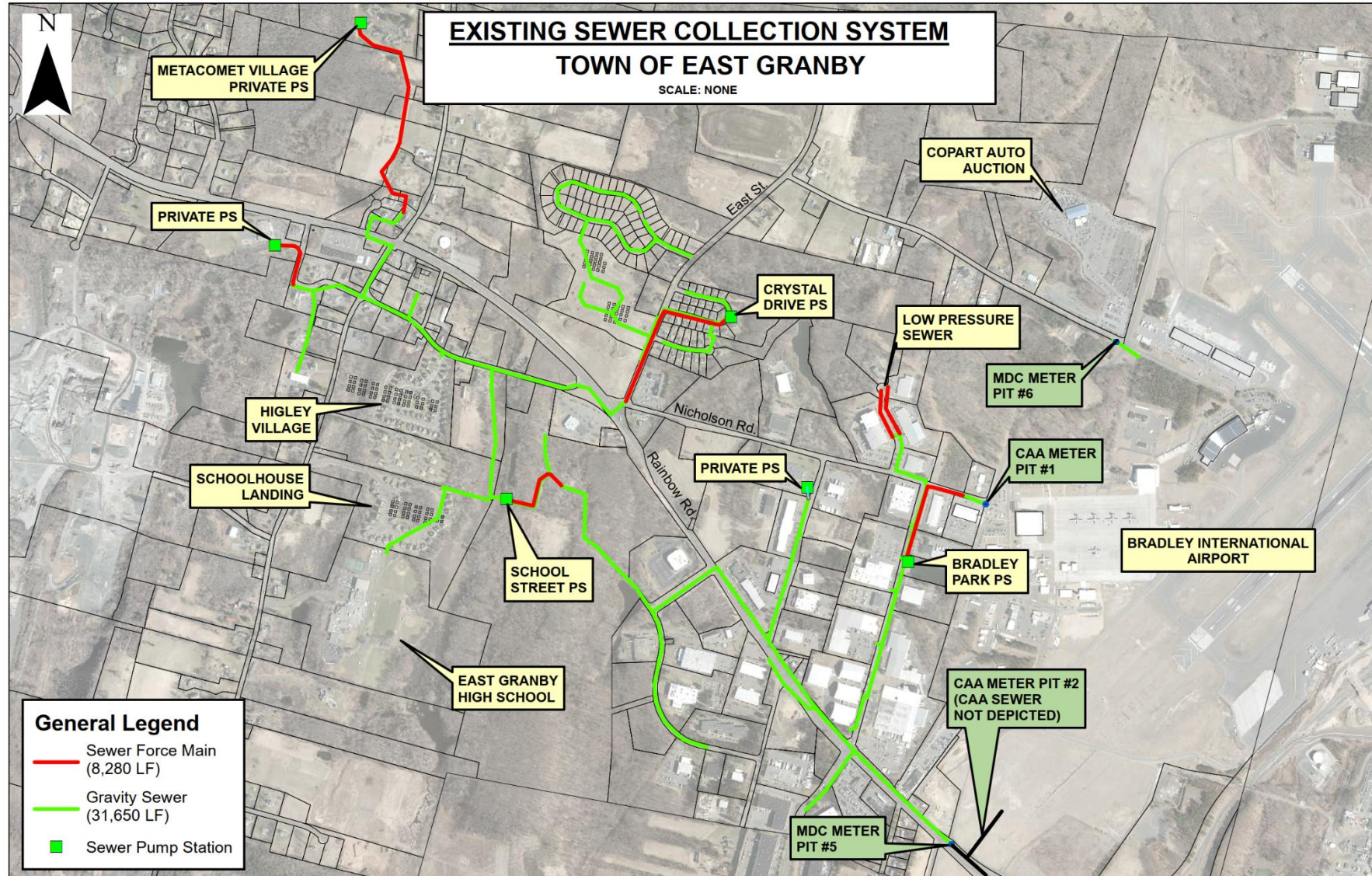


**Damaged Sewer
Manhole Cover**



**Sump Pump
Discharge to Sewer**

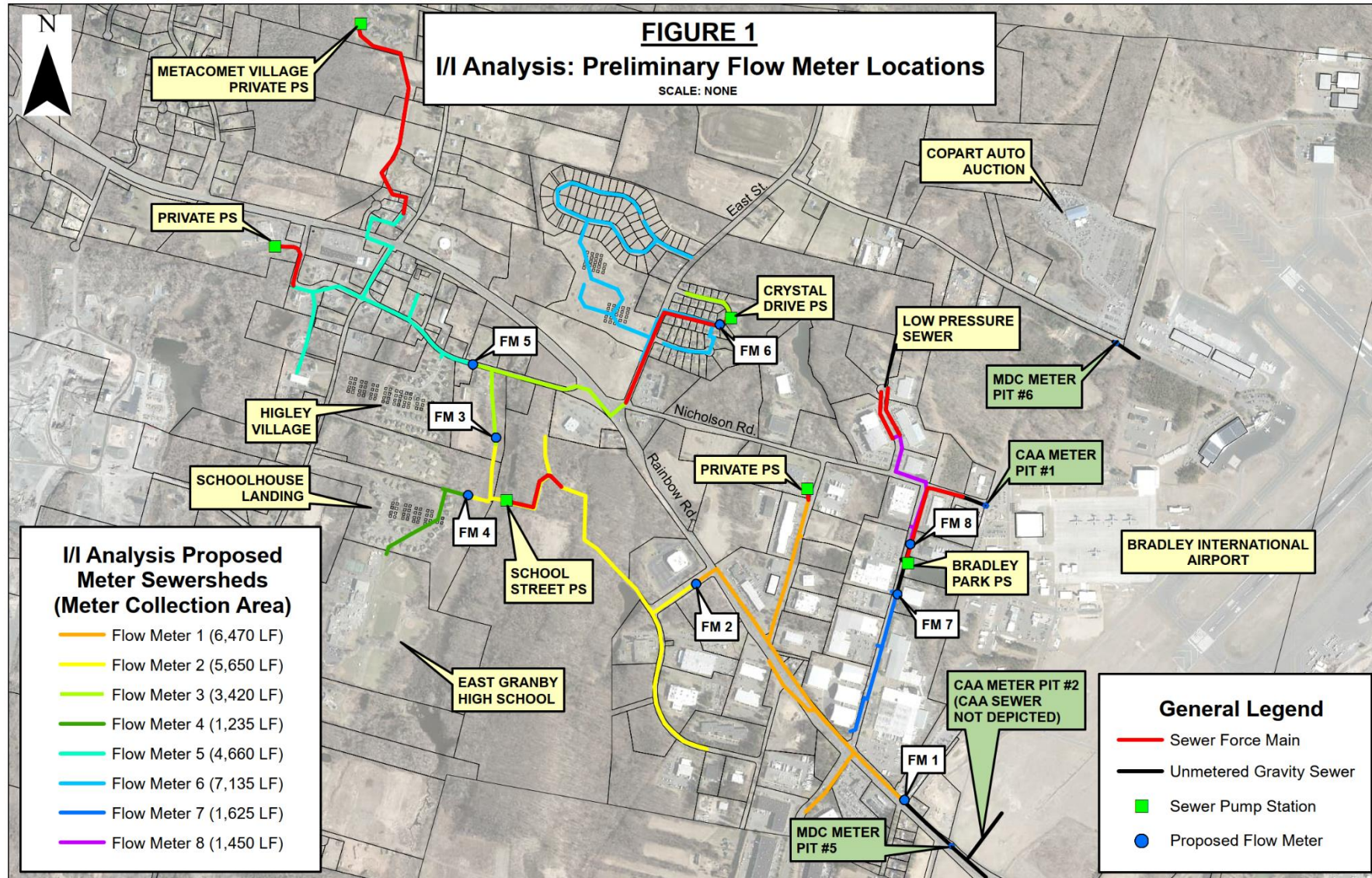
East Granby – Existing Sewer Collection System



Phase 1 - I/I Analysis

- Complete Flow Monitoring Study of existing Sanitary Sewer System (Spring of 2025)
 - Evaluate sewer system in smaller segments (sub-areas)
 - Flow Monitoring Goals
 - Install flow meters in locations that will provide consistent data
 - Capture a significant rain event

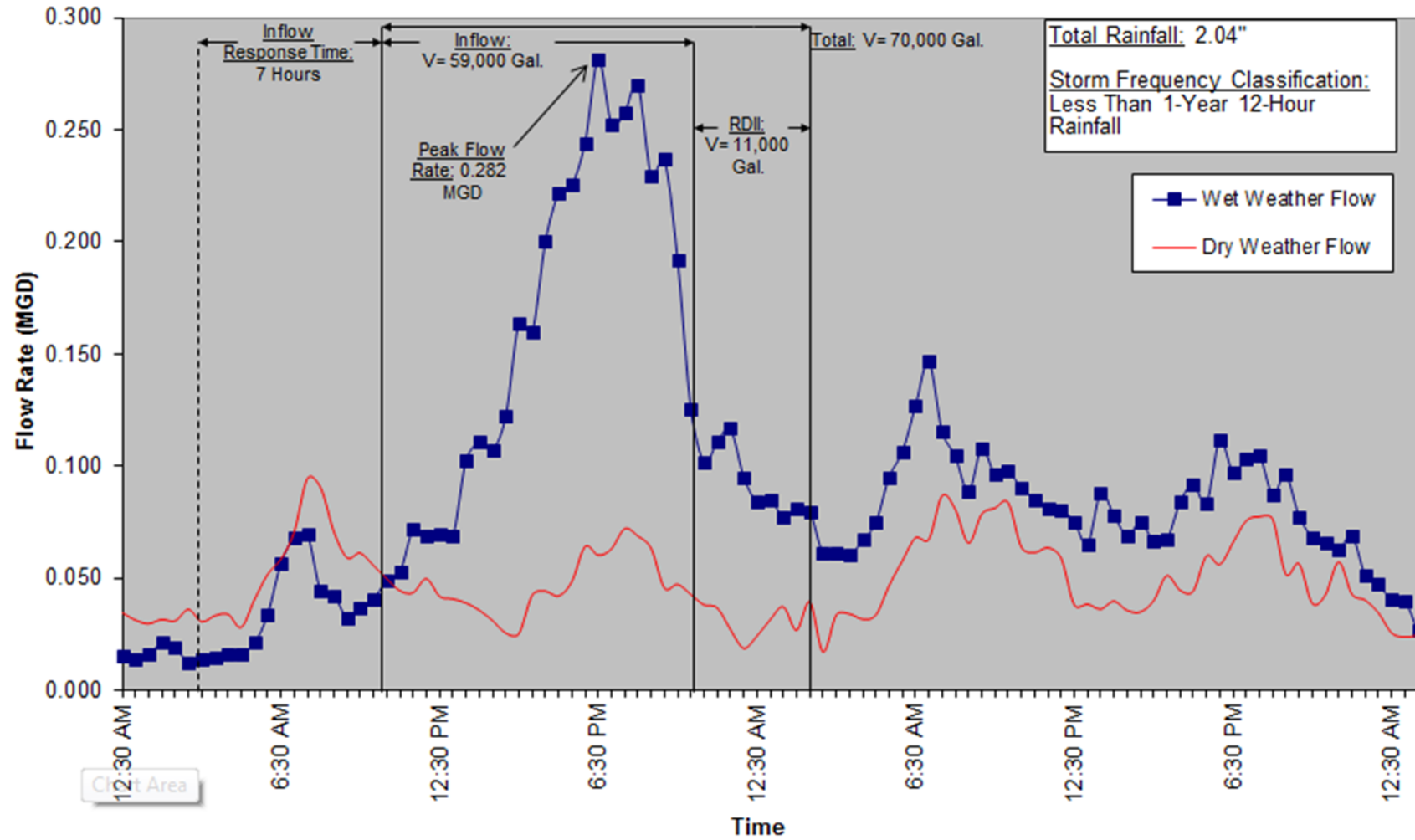
Flow Monitoring Study (Phase 1)



Phase 1 - I/I Analysis Cont'

- Evaluate data
 - Identify areas with excessive Infiltration / Inflow
 - Comparing dry weather flow to wet weather flow = Inflow
 - Comparing dry weather flow to water consumption data = Infiltration
- Prepare Summary Report
 - Summarizes findings from the data
 - Develop plan to target areas for further investigation (if necessary)
 - Further investigation: CCTV, Smoke Testing, Flow Isolation (metering)
 - Summary Report to be submitted to DEEP

Figure 6.13.1
Sanitary Flows on Addy Drive culdesac
Bristol, RI Manhole ID# 24-124
February 13, 2008 Rain Event



Questions?

Transportation & Traffic

- Highway & Roadway Design
- Complete Streets
- Impact, Circulation, & Parking Studies
- Traffic Calming
- Pedestrian/Bicycle Facilities
- Advanced Traffic Signal Systems

Landscape Architecture, Urban Design, Planning

- Master Planning & Visioning
- Streetscapes
- Bicycle & Pedestrian Trails
- Wayfinding & Visitor Experience
- School, Sports, & Recreational Facilities
- Green Infrastructure & Rain Gardens
- Parks & Open Spaces
- Climate Change Resilient Design & Planning

Water & Wastewater

- Water Storage & Distribution
- Wastewater Collection & Treatment
- Hydraulic Modeling
- Infiltration/Inflow Studies
- Facilities Planning
- Solid Waste Facilities & Biosolid Management

GIS & Asset Management

- Pavement Management
- Sign Inventory & MUTCD Compliance
- ADA Compliance
- Cemetery Mapping
- Web-based Applications
- Scanning & Retrieval Systems

Structural

- Bridge Inspections, Evaluations, & Ratings
- Design & Peer Reviews
- Highway & Pedestrian Bridge Design
- Design-Build
- Retaining Walls
- Culvert Design

Environmental

- LSP/LEP Services
- Brownfields Redevelopment
- Site Investigation & Remediation
- Hazardous Material Building Surveys Services
- Resource Area Boundary Delineation
- Ecological Services
- Permitting & Mitigation Design
- Municipal Peer Review & Expert Testimony

Civil/Site

- Sustainable Site Design & Permitting
- Land Use Management
- Master Planning
- Hydrology/Hydraulic Modeling & Design
- Watershed Studies
- Low Impact Development/ Green Solutions

Stormwater Management

- Stormwater Analysis & Best Management Practices Design
- EPA NPDES Permitting & Stormwater Pollution Prevention Plans
- MS4 Permit Assistance
- Municipal Facility Audits/Peer Reviews
- Climate Change Planning & Design
- IDDE Investigation Implementation

Construction

- Construction Administration/ Management
- Onsite Resident/Field Inspection Services
- Scheduling & Cost Estimating
- Constructability Evaluations
- Permitting, Testing, & Compliance