



Vegetation Management

.....
Town of East Granby

March 2, 2022

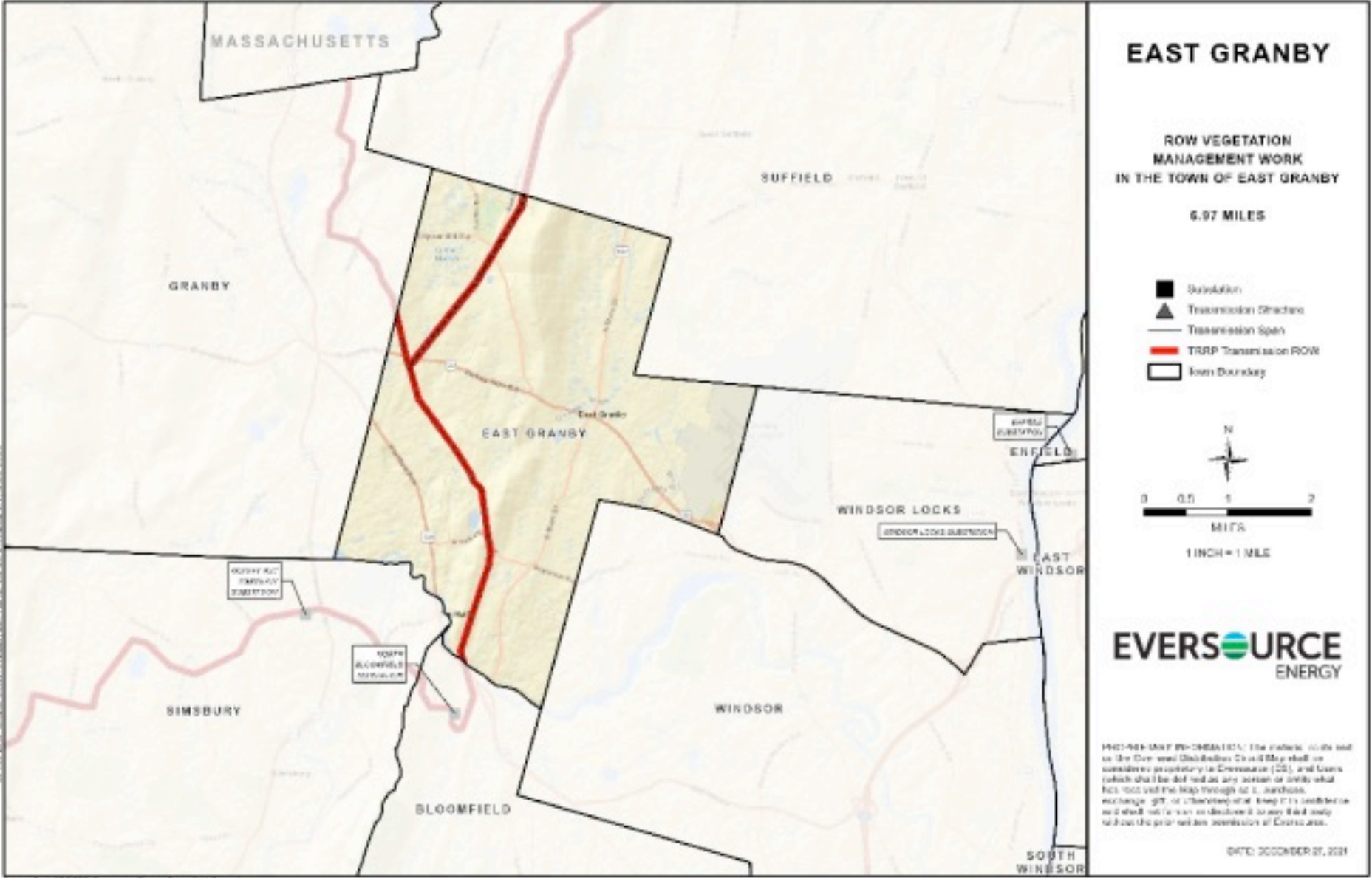




Transmission Vegetation Management

- We conduct removal of incompatible vegetation along our transmission lines to help ensure safe and reliable power
- More extensive clearance is required along transmission lines to **prevent power interruptions for tens of thousands of customers and dangerous public safety issues**

Transmission Right of Way Reliability Program – Work in East Granby



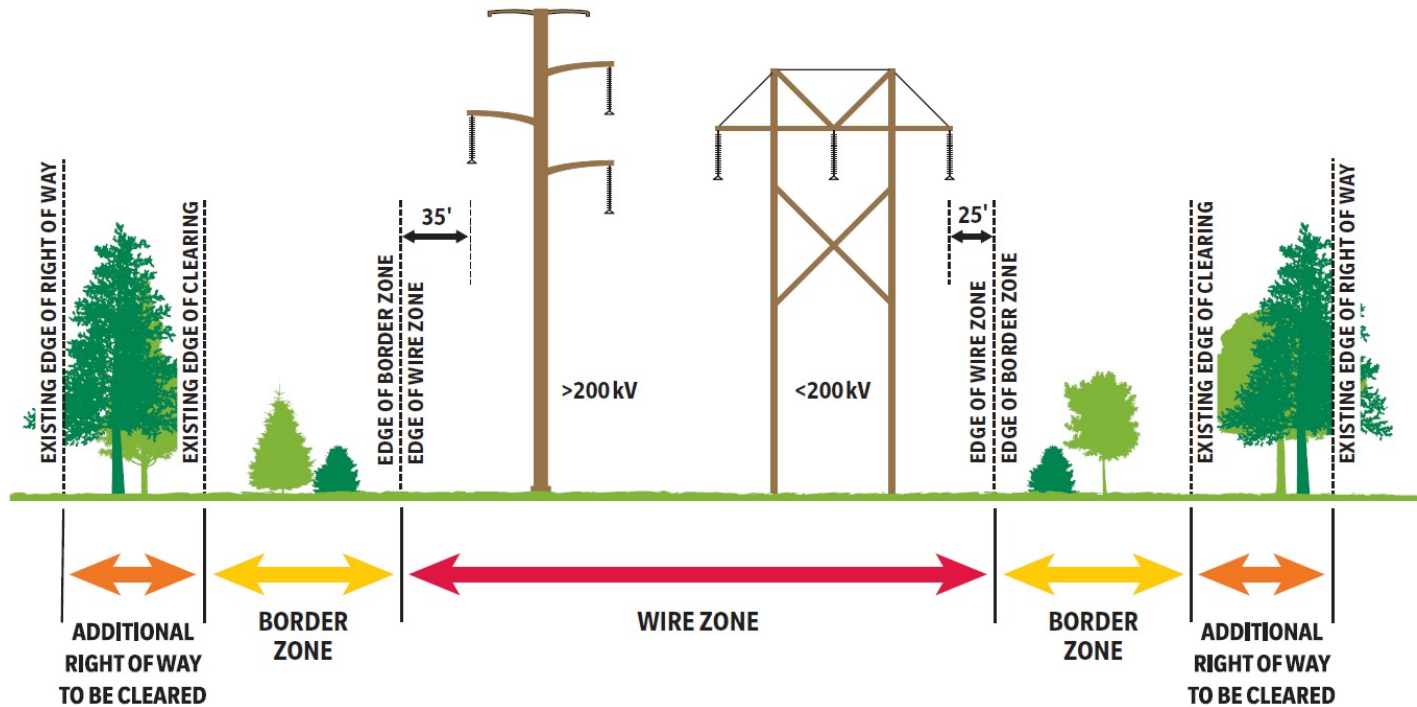
Transmission Right of Way Reliability Program – What we aim to avoid



Vegetation contacts with transmission facilities (pictured above), can cause power issues for thousands of electric customers at a time.

Our approach to vegetation management is to clear trees and other vegetation that may potentially interfere with the operation of the transmission facilities, including substations, structures and wires. This process turns the transmission corridor into a sustainable, diverse habitat of low-growing plant community dominated by grasses, flowers, ferns, and small shrubs.

Transmission Right of Way Reliability Program & Eversource Clearance Standards



Based on the width of the right of way, the type and number of transmission lines, the location of the lines within the right of way, and the topography, Eversource employs a "two-zone" vegetation maintenance method. This method establishes the following:

- The Wire Zone** is the area directly under the transmission lines, extending out 25 to 40 feet outside the wires depending on voltage. Eversource manages the wire zone to promote a low-growing plant community dominated by grasses, flowers, ferns and small shrubs under 3 feet in height at maturity. Within this zone, trees and brush are selectively removed to allow for the establishment and preservation of these native, low-growing plant communities in non-lawn areas. Only established compatible species with a mature height of 15 feet or less at maturity may be allowed to remain in the wire zone, depending on location. All other plants with a mature height greater than 15 feet will be removed.

- The Border Zone** is the area from outside wire zone to the edge of the cleared area or the easement edge. In this zone, incompatible tall-growing trees are removed and native trees and shrubs that have a mature height of 25 feet or less may remain where possible.

- The Additional Right of Way to be Cleared** is the area from the existing maintained edge to the edge of easement or up to 100 feet from the outside wire, as part of the **Transmission Right of Way Reliability Project (TRRP)**.

IWC – Exemption - Docket NO. 95-08-34 – DPUC Investigation of the Process and Jurisdiction over Siting Certain Utility Company Facilities and Plant in Connecticut

- Eversource's operations and facilities on its fee lands and on its rights of way are subject to the exclusive jurisdiction of the DPUC and the Connecticut Siting Council. Under CT law, the jurisdiction of local zoning and inland wetland commissions is limited to reviewing the proposed location or siting of electric plants and substations.
- Section 16-235 – Further discusses this point.
- We are required to notify the town first select person, mayor, or primary person in charge of our work activity.

Transmission Right of Way Reliability Program – Permitting

(internal Eversource project review)

- Licensing & Permitting staff review each project against an internal database of information to determine if known resources are present in the project area
- If known resources are present appropriate protection measures and/or resource specific plans are developed to avoid and minimize impacts that could occur
- This internal review is completed for the entire project and protection measures are put in place even if submittals to regulatory agencies are not required
- Detailed project mapping is also developed to illustrate all the known resources and to provide key information about the required protection measures and other BMPs

SOME ACTIVITIES DO TRIGGER THE NEED FOR SUBMITTALS TO STATE AND FEDERAL AGENCIES....

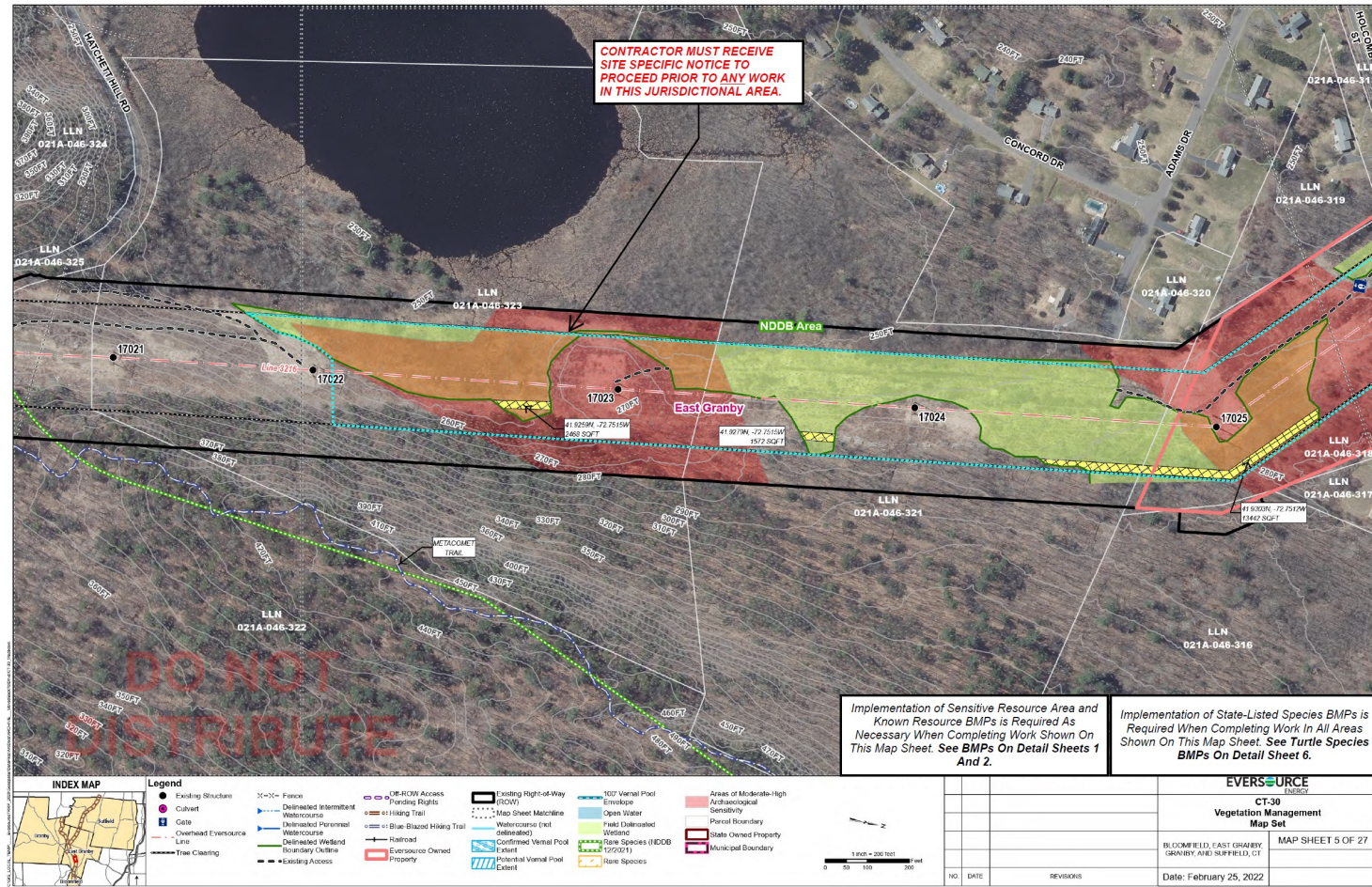
Transmission Right of Way Reliability Program – Permitting

(submittal to and review by regulatory agencies)

- Department of the Army General Permits for the State of Connecticut
 - Submission is required if a dredge or fill (i.e., placement of construction mats) will occur in water resources (wetlands)
 - Self Verification Notification Forms have been submitted to the ACOE for all wetland matting for this project under GP 21
- Natural Diversity Data Base (NDDDB) - pertains to state-listed rare species
 - A Request for Review application is provided to DEEP if a General Permit submittal to the ACOE and DEEP is required for work occurring in an NDDDB polygon OR for any work on DEEP-owned land in an NDDDB polygon

Transmission Right of Way Reliability Program – Planning

Detailed mapping with notes for work crews





- Sensitive resources (i.e., wetlands, listed species, cultural resources) are flagged in the field prior to the start of work
- Where possible impacts to these resources are minimized by limiting the use of equipment and temporary matting by completing the work by hand
- Eversource maintains a detailed BMP Manual that all contractors are required to comply with to further minimize impacts
- When necessary surveys to determine/presence absence of sensitive resources are completed prior to the start of work
- Qualified monitors are provided where necessary to oversee the contractor's work to make sure all the required protection measures are being implemented

Thank You

Contact Information:

Dan Burns, Project Services – Transmission Vegetation Management
daniel.p.burns@eversource.com

Kathy Ferrier, Supervisor Transmission Vegetation Management
kathleen.ferrier@eversource.com

Michael Rasy, Transmission Vegetation Management Arborist
michael.rasy@eversource.com

For the Public:

Vegetation Management Hotline

Phone: 888-673-9943

Email: CTVegMaintenance@Eversource.com