

LAND DEVELOPMENT PLANS FOR PROPOSED WAREHOUSE

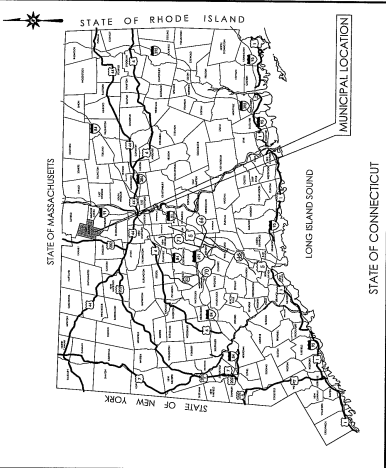
7, 11, 15 & 17 BRADLEY PARK ROAD
EAST GRANBY, CONNECTICUT 06026

PREPARED FOR:
GFI PARTNERS LLC
133 PEARL STREET
BOSTON, MASSACHUSETTS 02110

PREPARED BY:



100 CONSTITUTION PLAZA, 10TH FLOOR
HARTFORD, CONNECTICUT 06103
(860) 249-2200
(860) 249-2400 Fax



LOCATION MAP
N.T.S.



VICINITY MAP
SCALE 1"=300'

CONTENTS

Sheet Number	Sheet Title	Sheet Description
1	Cover Sheet	CV-1
2	General Notes	GN-1
3	Demolition Plan	DM-1
4	Site Plan	SP-1
5	Grading and Drainage Plan	GD-1
6	Site Utilities Plan	SU-1
7	Sediment and Erosion Control Plan	EC-1
8	Sediment and Erosion Control Notes	EC-2
9	Sediment and Erosion Control Details	EC-3
10	Landscaping Plan	LL-1
11	Landscaping Details and Notes	LL-2
12	Lighting Plan	LP-1
13	Detail Sheet 1	DN-1
14	Detail Sheet 2	DN-2
15	Detail Sheet 3	DN-3

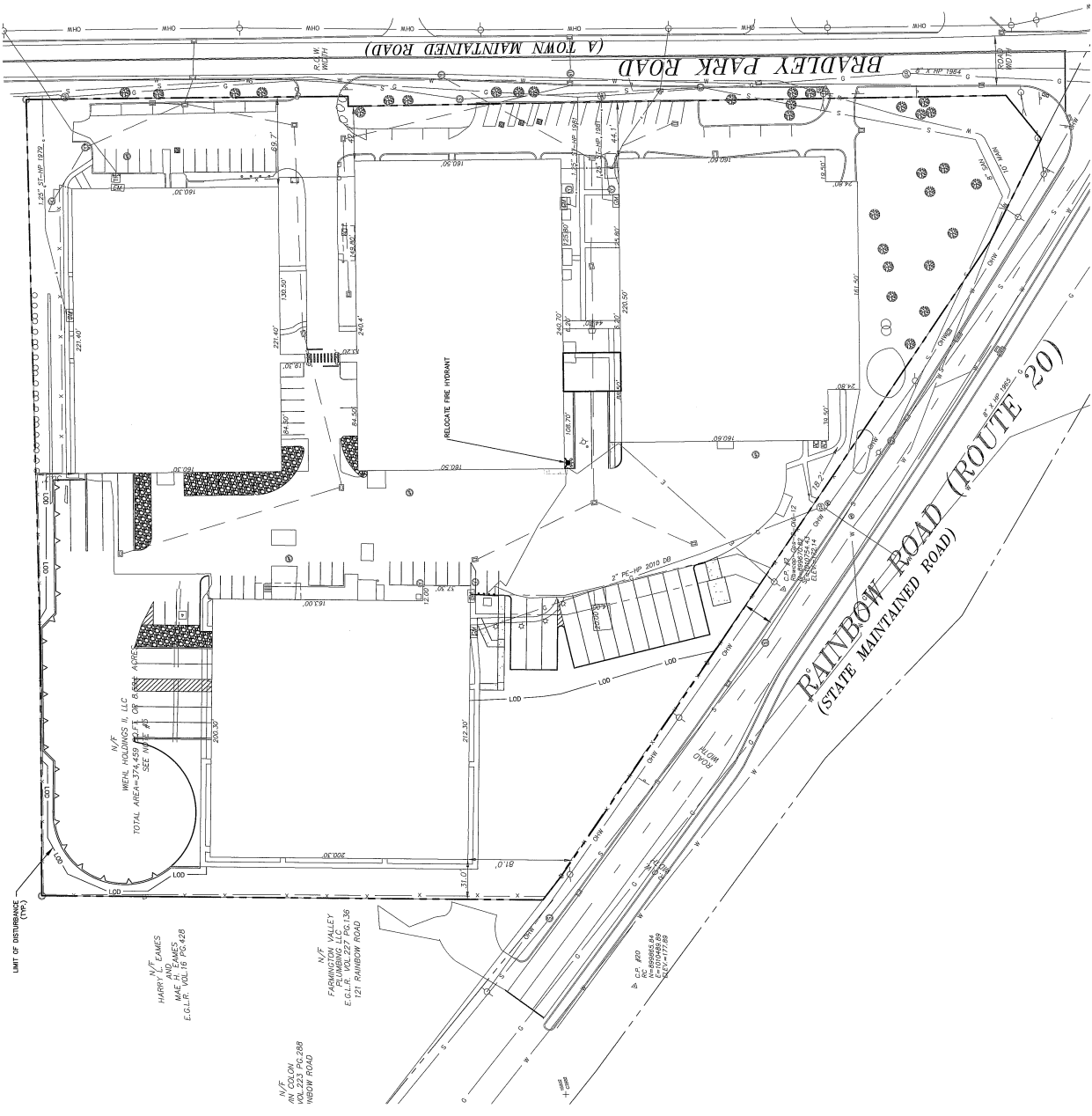
SCALE: 1/8"=1'-0"
DATE: 08/05/2022

DEVELOPER: GFI PARTNERS LLC BOSTON, MASSACHUSETTS 02110	OWNER: BRADLEY PARK PROPERTY OWNER LLC BOSTON, MASSACHUSETTS 02110
<p>DATES</p> <p>ISSUE DATE: AUGUST 5, 2022 SITE PLAN REVIEW</p> <p>REVISION:</p>	



SITE UTILITIES LEGEND

- PROPERTY LINE
- LIMIT OF DISTURBANCE LINE AND CONSTRUCTION LIMIT LINE
- ELECTRIC AND TELECOMMUNICATIONS LINES
- ELECTRIC LINE
- TELECOMMUNICATIONS LINES
- WATER LINE
- SEWER LINE
- SANITARY SEWER LINE
- SANITARY SEWER FORCE MAIN
- OVERHEAD LINE
- THUNDER
- LIQUID
- UTILITY POLE
- SANITARY MANHOLE
- SANITARY CLEANOUT
- WATER VALVE
- GATE VALVE
- THRUST BLOCK
- GREASE TRAP
- OUTLET CONTROL STRUCTURE
- HYDRODYNAMIC SEPARATOR
- STORM LINE
- CATCH BASIN
- STORM MANHOLE
- FLARED END
- END WALL OR HEADWALL
- PROPOSED CONTOUR LINE
- PROPOSED SPOT GRADE
- AREAS TO BE CURBED
- EC-BOTTOM OF CURB
- EC-TOP OF CURB
- BW-BOTTOM OF WALL
- BW-TOP OF WALL
- PROPOSED SURFACE SLOPE



GRAPHIC SCALE
40 20 0
SCALE IN FEET

SU-1

SITE UTILITIES PLAN

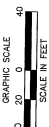
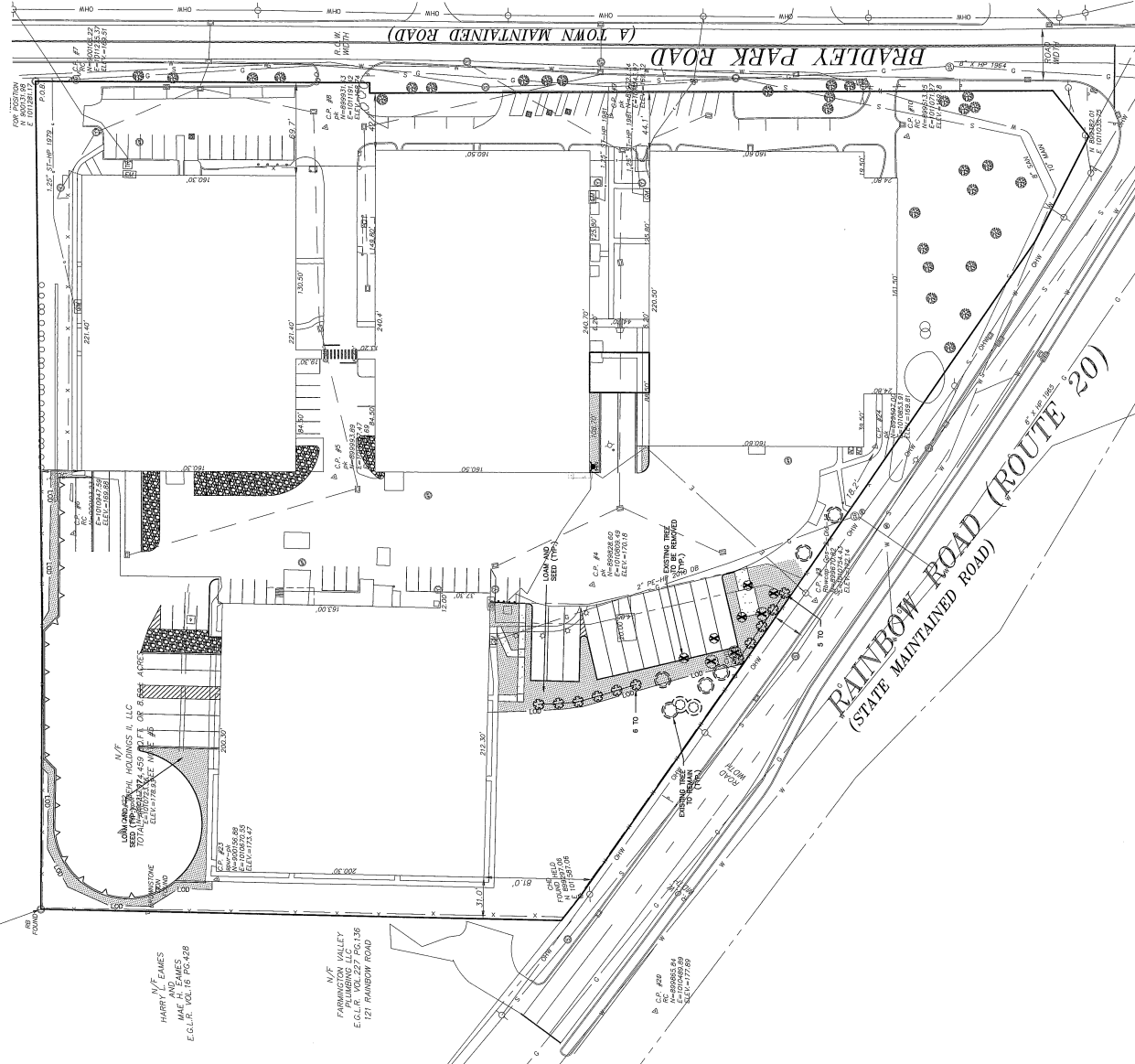
Project No. 1000000001
 Date 08/01/2022
 Scale 1"=40'-0"
 Author JAC
 Designer JAC
 Checker JAC
 Engineer JAC

EAST GRANBY WAREHOUSES
 7, 11, 15 & 17 BRADLEY PARK ROAD
 EAST GRANBY, CONNECTICUT



300 Research Parkway
 Andover, CT 06020
 (860) 379-1700
B Companies
 Environmental
 Architecture
 Engineering
 Land Surveying





LANDSCAPE PLANT SCHEDULE

KEY	CITY	BOTANICAL NAME	COMMON NAME	ROOT	SIZE
11	11	TALIA PUCKA 'GREEN GRANT'	GREEN GRANT ARBORESCITE	BBB	6-7 FT.

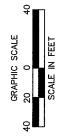
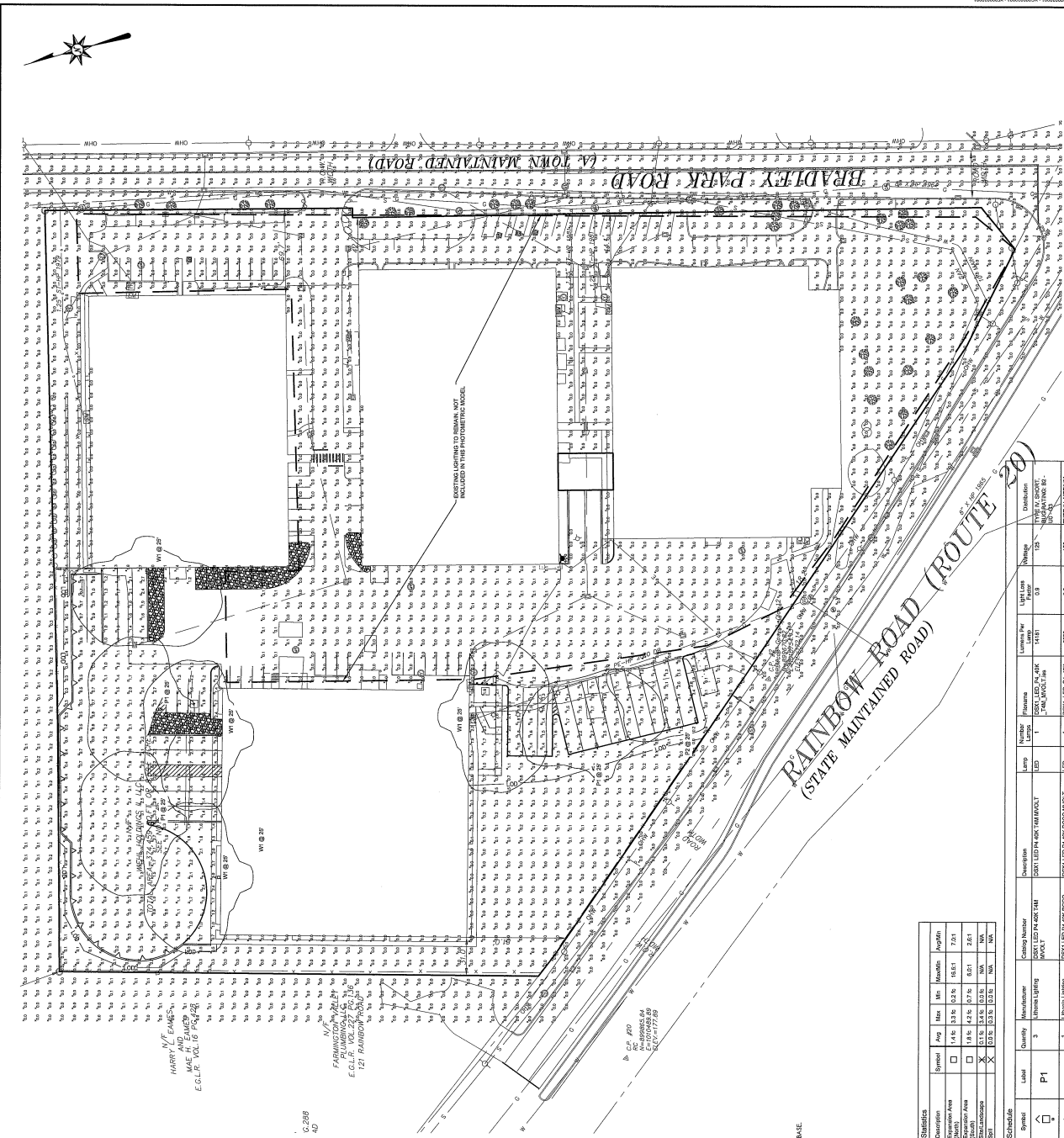
NOTES:
1) ALL SUBSTITUTIONS MUST RECEIVE APPROVAL FROM THE LANDSCAPE ARCHITECT PRIOR TO DELIVERY TO SITE.
2) THE QUANTITIES SHOWN ON THE PLANTING PLAN SHOWING THE QUANTITIES IN THE PLANT LIST ARE PROVIDED FOR THE CONTRACTOR'S CONSIDERATION ON THE BASIS OF THE INFORMATION PROVIDED IN THIS PLAN.
3) IF THERE IS A DISCREPANCY BETWEEN BOTANICAL AND COMMON NAME, BOTANICAL NAME PREVAILS.

SEED MIX NOTES

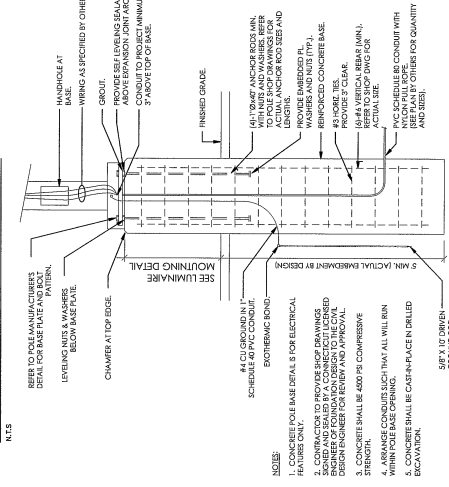
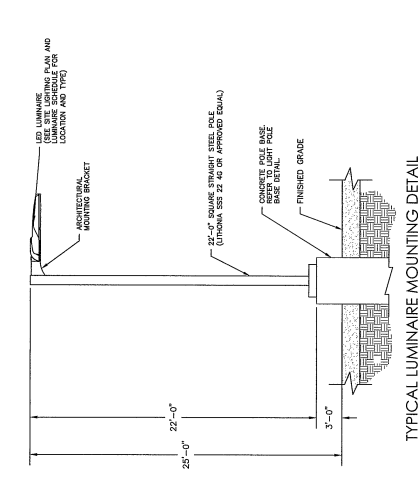
- A. LAWN SEED MIX:
 - 15% PERENNIAL FESCUE (BLENDED WITH 3 IMPROVED HYDRANGEA)
 - 25% FINE LEAF OR ORNAMENTAL FESCUE (BLENDED WITH 3 IMPROVED HYDRANGEA)
 - 60% KENTUCKY BLUEGRASS (BLENDED WITH 3 IMPROVED HYDRANGEA)
 - SEEDING DATES: AUGUST 15 - OCTOBER 1 AND APRIL 15 - JUNE 30 UNLESS OTHERWISE APPROVED BY THE OWNER OR LANDSCAPE ARCHITECT.

LANDSCAPE KEY

- EXISTING TREE TO REMAIN
- EXISTING TREE TO BE REMOVED
- PROPOSED EVERGREEN TREE
- PROPOSED LAWN AND SEED



- LIGHTING NOTES**
- CONTRACTOR SHALL VERIFY ALL REGULATIONS, STATE CODES AND NATIONAL ELECTRICAL CODE WITH ALL APPLICABLE AGENCIES AND AGENCIES INVOLVED IN THE PROJECT.
 - CONTRACTOR SHALL VERIFY ALL REGULATIONS, STATE CODES AND NATIONAL ELECTRICAL CODE WITH ALL APPLICABLE AGENCIES AND AGENCIES INVOLVED IN THE PROJECT.
 - CONTRACTOR SHALL VERIFY ALL REGULATIONS, STATE CODES AND NATIONAL ELECTRICAL CODE WITH ALL APPLICABLE AGENCIES AND AGENCIES INVOLVED IN THE PROJECT.
 - CONTRACTOR SHALL VERIFY ALL REGULATIONS, STATE CODES AND NATIONAL ELECTRICAL CODE WITH ALL APPLICABLE AGENCIES AND AGENCIES INVOLVED IN THE PROJECT.
 - CONTRACTOR SHALL VERIFY ALL REGULATIONS, STATE CODES AND NATIONAL ELECTRICAL CODE WITH ALL APPLICABLE AGENCIES AND AGENCIES INVOLVED IN THE PROJECT.
 - CONTRACTOR SHALL VERIFY ALL REGULATIONS, STATE CODES AND NATIONAL ELECTRICAL CODE WITH ALL APPLICABLE AGENCIES AND AGENCIES INVOLVED IN THE PROJECT.
 - CONTRACTOR SHALL VERIFY ALL REGULATIONS, STATE CODES AND NATIONAL ELECTRICAL CODE WITH ALL APPLICABLE AGENCIES AND AGENCIES INVOLVED IN THE PROJECT.
 - CONTRACTOR SHALL VERIFY ALL REGULATIONS, STATE CODES AND NATIONAL ELECTRICAL CODE WITH ALL APPLICABLE AGENCIES AND AGENCIES INVOLVED IN THE PROJECT.
 - CONTRACTOR SHALL VERIFY ALL REGULATIONS, STATE CODES AND NATIONAL ELECTRICAL CODE WITH ALL APPLICABLE AGENCIES AND AGENCIES INVOLVED IN THE PROJECT.
 - CONTRACTOR SHALL VERIFY ALL REGULATIONS, STATE CODES AND NATIONAL ELECTRICAL CODE WITH ALL APPLICABLE AGENCIES AND AGENCIES INVOLVED IN THE PROJECT.
 - CONTRACTOR SHALL VERIFY ALL REGULATIONS, STATE CODES AND NATIONAL ELECTRICAL CODE WITH ALL APPLICABLE AGENCIES AND AGENCIES INVOLVED IN THE PROJECT.
 - CONTRACTOR SHALL VERIFY ALL REGULATIONS, STATE CODES AND NATIONAL ELECTRICAL CODE WITH ALL APPLICABLE AGENCIES AND AGENCIES INVOLVED IN THE PROJECT.
 - CONTRACTOR SHALL VERIFY ALL REGULATIONS, STATE CODES AND NATIONAL ELECTRICAL CODE WITH ALL APPLICABLE AGENCIES AND AGENCIES INVOLVED IN THE PROJECT.
 - CONTRACTOR SHALL VERIFY ALL REGULATIONS, STATE CODES AND NATIONAL ELECTRICAL CODE WITH ALL APPLICABLE AGENCIES AND AGENCIES INVOLVED IN THE PROJECT.
 - CONTRACTOR SHALL VERIFY ALL REGULATIONS, STATE CODES AND NATIONAL ELECTRICAL CODE WITH ALL APPLICABLE AGENCIES AND AGENCIES INVOLVED IN THE PROJECT.



TYPICAL CONCRETE LIGHT POLE BASE DETAIL
 NOTES:
 1. CONCRETE POLE BASE SHALL BE PER ELECTRICAL SCHEDULE.
 2. CONTRACTOR TO PROVIDE SHOP DRAWINGS FOR ALL CONCRETE WORK AND SHALL BE APPROVED BY A REGISTERED PROFESSIONAL ENGINEER FOR REVIEW AND APPROVAL.
 3. CONCRETE SHALL BE 4000 PSI COMPRESSIVE STRENGTH.
 4. CONCRETE SHALL BE CAST-IN-PLACE IN BELLED EXCAVATION.
 5. SET X TO BE DRIVEN TO FINISH GRADE.
 6. SET Y TO BE DRIVEN TO FINISH GRADE.

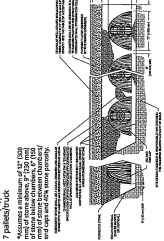
Symbol	Quantity	Manufacturer	Category Number	Description	Lumens Per Foot	Footcandle	Notes
P1	1	LED	6000 LED 4' X 8' X 10'	6000 LED 4' X 8' X 10'	14100	141	
P2	1	LED	6000 LED 4' X 8' X 10'	6000 LED 4' X 8' X 10'	8800	88	
W1	1	LED	6000 LED 4' X 8' X 10'	6000 LED 4' X 8' X 10'	15000	150	

Symbol	Quantity	Manufacturer	Category Number	Description	Lumens Per Foot	Footcandle	Notes
P1	1	LED	6000 LED 4' X 8' X 10'	6000 LED 4' X 8' X 10'	14100	141	
P2	1	LED	6000 LED 4' X 8' X 10'	6000 LED 4' X 8' X 10'	8800	88	
W1	1	LED	6000 LED 4' X 8' X 10'	6000 LED 4' X 8' X 10'	15000	150	

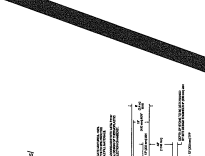
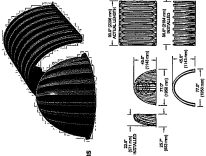
StormTech® MC-3500 Chamber

Designed to meet the most rigorous industry performance standards for superior structural integrity while providing designers with a wide range of options. The StormTech system is designed primarily to be used in conjunction with StormTech® Storm Chambers. StormTech chambers can also be used in conjunction with StormTech® Storm Chambers. StormTech chambers can also be used in conjunction with StormTech® Storm Chambers.

- Specifications**
- Size (L x W x H) 39" x 77" x 46" (1000 mm x 1950 mm x 1168 mm)
- End Cap Storage 675 cu in (11.1 L)
- Min. Installed Storage* 1093 cu in (17.8 L)
- Weight 22.0 (40.5 lb)
- Min. Installed Storage* 451 cu in (7.3 L)
- Weight 14.0 (30.9 lb)
- Shipping 7 per case/pallet
- 2 per case/pallet



ADS stormtech



StormTech MC-3500 Specifications

Storm Chamber	Chamber and Down Foundation Depth (ft.)	Volume (cu ft)	Volume (L)
Storm Chamber	1.5 (0.46)	1.5 (0.46)	42.5 (1200)
Storm Chamber	2.0 (0.61)	2.0 (0.61)	56.7 (1590)
Storm Chamber	2.5 (0.76)	2.5 (0.76)	70.9 (1980)
Storm Chamber	3.0 (0.91)	3.0 (0.91)	85.1 (2360)
Storm Chamber	3.5 (1.07)	3.5 (1.07)	99.3 (2750)
Storm Chamber	4.0 (1.22)	4.0 (1.22)	113.5 (3140)
Storm Chamber	4.5 (1.37)	4.5 (1.37)	127.7 (3530)
Storm Chamber	5.0 (1.52)	5.0 (1.52)	141.9 (3920)
Storm Chamber	5.5 (1.68)	5.5 (1.68)	156.1 (4310)
Storm Chamber	6.0 (1.83)	6.0 (1.83)	170.3 (4700)
Storm Chamber	6.5 (1.98)	6.5 (1.98)	184.5 (5090)
Storm Chamber	7.0 (2.13)	7.0 (2.13)	198.7 (5480)
Storm Chamber	7.5 (2.29)	7.5 (2.29)	212.9 (5870)
Storm Chamber	8.0 (2.44)	8.0 (2.44)	227.1 (6260)
Storm Chamber	8.5 (2.59)	8.5 (2.59)	241.3 (6650)
Storm Chamber	9.0 (2.74)	9.0 (2.74)	255.5 (7040)
Storm Chamber	9.5 (2.90)	9.5 (2.90)	269.7 (7430)
Storm Chamber	10.0 (3.05)	10.0 (3.05)	283.9 (7820)
Storm Chamber	10.5 (3.20)	10.5 (3.20)	298.1 (8210)
Storm Chamber	11.0 (3.35)	11.0 (3.35)	312.3 (8600)
Storm Chamber	11.5 (3.51)	11.5 (3.51)	326.5 (8990)
Storm Chamber	12.0 (3.66)	12.0 (3.66)	340.7 (9380)
Storm Chamber	12.5 (3.81)	12.5 (3.81)	354.9 (9770)
Storm Chamber	13.0 (3.96)	13.0 (3.96)	369.1 (10160)
Storm Chamber	13.5 (4.12)	13.5 (4.12)	383.3 (10550)
Storm Chamber	14.0 (4.27)	14.0 (4.27)	397.5 (10940)
Storm Chamber	14.5 (4.42)	14.5 (4.42)	411.7 (11330)
Storm Chamber	15.0 (4.57)	15.0 (4.57)	425.9 (11720)
Storm Chamber	15.5 (4.73)	15.5 (4.73)	440.1 (12110)
Storm Chamber	16.0 (4.88)	16.0 (4.88)	454.3 (12500)
Storm Chamber	16.5 (5.03)	16.5 (5.03)	468.5 (12890)
Storm Chamber	17.0 (5.19)	17.0 (5.19)	482.7 (13280)
Storm Chamber	17.5 (5.34)	17.5 (5.34)	496.9 (13670)
Storm Chamber	18.0 (5.49)	18.0 (5.49)	511.1 (14060)
Storm Chamber	18.5 (5.64)	18.5 (5.64)	525.3 (14450)
Storm Chamber	19.0 (5.80)	19.0 (5.80)	539.5 (14840)
Storm Chamber	19.5 (5.95)	19.5 (5.95)	553.7 (15230)
Storm Chamber	20.0 (6.10)	20.0 (6.10)	567.9 (15620)
Storm Chamber	20.5 (6.25)	20.5 (6.25)	582.1 (16010)
Storm Chamber	21.0 (6.41)	21.0 (6.41)	596.3 (16400)
Storm Chamber	21.5 (6.56)	21.5 (6.56)	610.5 (16790)
Storm Chamber	22.0 (6.71)	22.0 (6.71)	624.7 (17180)
Storm Chamber	22.5 (6.87)	22.5 (6.87)	638.9 (17570)
Storm Chamber	23.0 (7.02)	23.0 (7.02)	653.1 (17960)
Storm Chamber	23.5 (7.17)	23.5 (7.17)	667.3 (18350)
Storm Chamber	24.0 (7.32)	24.0 (7.32)	681.5 (18740)
Storm Chamber	24.5 (7.48)	24.5 (7.48)	695.7 (19130)
Storm Chamber	25.0 (7.63)	25.0 (7.63)	709.9 (19520)
Storm Chamber	25.5 (7.78)	25.5 (7.78)	724.1 (19910)
Storm Chamber	26.0 (7.93)	26.0 (7.93)	738.3 (20300)
Storm Chamber	26.5 (8.09)	26.5 (8.09)	752.5 (20690)
Storm Chamber	27.0 (8.24)	27.0 (8.24)	766.7 (21080)
Storm Chamber	27.5 (8.39)	27.5 (8.39)	780.9 (21470)
Storm Chamber	28.0 (8.54)	28.0 (8.54)	795.1 (21860)
Storm Chamber	28.5 (8.70)	28.5 (8.70)	809.3 (22250)
Storm Chamber	29.0 (8.85)	29.0 (8.85)	823.5 (22640)
Storm Chamber	29.5 (9.00)	29.5 (9.00)	837.7 (23030)
Storm Chamber	30.0 (9.15)	30.0 (9.15)	851.9 (23420)
Storm Chamber	30.5 (9.31)	30.5 (9.31)	866.1 (23810)
Storm Chamber	31.0 (9.46)	31.0 (9.46)	880.3 (24200)
Storm Chamber	31.5 (9.61)	31.5 (9.61)	894.5 (24590)
Storm Chamber	32.0 (9.76)	32.0 (9.76)	908.7 (24980)
Storm Chamber	32.5 (9.91)	32.5 (9.91)	922.9 (25370)
Storm Chamber	33.0 (10.07)	33.0 (10.07)	937.1 (25760)
Storm Chamber	33.5 (10.22)	33.5 (10.22)	951.3 (26150)
Storm Chamber	34.0 (10.37)	34.0 (10.37)	965.5 (26540)
Storm Chamber	34.5 (10.52)	34.5 (10.52)	979.7 (26930)
Storm Chamber	35.0 (10.68)	35.0 (10.68)	993.9 (27320)
Storm Chamber	35.5 (10.83)	35.5 (10.83)	1008.1 (27710)
Storm Chamber	36.0 (10.98)	36.0 (10.98)	1022.3 (28100)
Storm Chamber	36.5 (11.13)	36.5 (11.13)	1036.5 (28490)
Storm Chamber	37.0 (11.29)	37.0 (11.29)	1050.7 (28880)
Storm Chamber	37.5 (11.44)	37.5 (11.44)	1064.9 (29270)
Storm Chamber	38.0 (11.59)	38.0 (11.59)	1079.1 (29660)
Storm Chamber	38.5 (11.74)	38.5 (11.74)	1093.3 (29990)
Storm Chamber	39.0 (11.90)	39.0 (11.90)	1107.5 (30380)
Storm Chamber	39.5 (12.05)	39.5 (12.05)	1121.7 (30770)
Storm Chamber	40.0 (12.20)	40.0 (12.20)	1135.9 (31160)
Storm Chamber	40.5 (12.35)	40.5 (12.35)	1150.1 (31550)
Storm Chamber	41.0 (12.51)	41.0 (12.51)	1164.3 (31940)
Storm Chamber	41.5 (12.66)	41.5 (12.66)	1178.5 (32330)
Storm Chamber	42.0 (12.81)	42.0 (12.81)	1192.7 (32720)
Storm Chamber	42.5 (12.96)	42.5 (12.96)	1206.9 (33110)
Storm Chamber	43.0 (13.12)	43.0 (13.12)	1221.1 (33500)
Storm Chamber	43.5 (13.27)	43.5 (13.27)	1235.3 (33890)
Storm Chamber	44.0 (13.42)	44.0 (13.42)	1249.5 (34280)
Storm Chamber	44.5 (13.57)	44.5 (13.57)	1263.7 (34670)
Storm Chamber	45.0 (13.73)	45.0 (13.73)	1277.9 (35060)
Storm Chamber	45.5 (13.88)	45.5 (13.88)	1292.1 (35450)
Storm Chamber	46.0 (14.03)	46.0 (14.03)	1306.3 (35840)
Storm Chamber	46.5 (14.18)	46.5 (14.18)	1320.5 (36230)
Storm Chamber	47.0 (14.34)	47.0 (14.34)	1334.7 (36620)
Storm Chamber	47.5 (14.49)	47.5 (14.49)	1348.9 (37010)
Storm Chamber	48.0 (14.64)	48.0 (14.64)	1363.1 (37400)
Storm Chamber	48.5 (14.80)	48.5 (14.80)	1377.3 (37790)
Storm Chamber	49.0 (14.95)	49.0 (14.95)	1391.5 (38180)
Storm Chamber	49.5 (15.10)	49.5 (15.10)	1405.7 (38570)
Storm Chamber	50.0 (15.25)	50.0 (15.25)	1419.9 (38960)
Storm Chamber	50.5 (15.41)	50.5 (15.41)	1434.1 (39350)
Storm Chamber	51.0 (15.56)	51.0 (15.56)	1448.3 (39740)
Storm Chamber	51.5 (15.71)	51.5 (15.71)	1462.5 (40130)
Storm Chamber	52.0 (15.86)	52.0 (15.86)	1476.7 (40520)
Storm Chamber	52.5 (16.02)	52.5 (16.02)	1490.9 (40910)
Storm Chamber	53.0 (16.17)	53.0 (16.17)	1505.1 (41300)
Storm Chamber	53.5 (16.32)	53.5 (16.32)	1519.3 (41690)
Storm Chamber	54.0 (16.47)	54.0 (16.47)	1533.5 (42080)
Storm Chamber	54.5 (16.63)	54.5 (16.63)	1547.7 (42470)
Storm Chamber	55.0 (16.78)	55.0 (16.78)	1561.9 (42860)
Storm Chamber	55.5 (16.93)	55.5 (16.93)	1576.1 (43250)
Storm Chamber	56.0 (17.08)	56.0 (17.08)	1590.3 (43640)
Storm Chamber	56.5 (17.24)	56.5 (17.24)	1604.5 (44030)
Storm Chamber	57.0 (17.39)	57.0 (17.39)	1618.7 (44420)
Storm Chamber	57.5 (17.54)	57.5 (17.54)	1632.9 (44810)
Storm Chamber	58.0 (17.69)	58.0 (17.69)	1647.1 (45200)
Storm Chamber	58.5 (17.85)	58.5 (17.85)	1661.3 (45590)
Storm Chamber	59.0 (18.00)	59.0 (18.00)	1675.5 (45980)
Storm Chamber	59.5 (18.15)	59.5 (18.15)	1689.7 (46370)
Storm Chamber	60.0 (18.30)	60.0 (18.30)	1703.9 (46760)
Storm Chamber	60.5 (18.46)	60.5 (18.46)	1718.1 (47150)
Storm Chamber	61.0 (18.61)	61.0 (18.61)	1732.3 (47540)
Storm Chamber	61.5 (18.76)	61.5 (18.76)	1746.5 (47930)
Storm Chamber	62.0 (18.91)	62.0 (18.91)	1760.7 (48320)
Storm Chamber	62.5 (19.07)	62.5 (19.07)	1774.9 (48710)
Storm Chamber	63.0 (19.22)	63.0 (19.22)	1789.1 (49100)
Storm Chamber	63.5 (19.37)	63.5 (19.37)	1803.3 (49490)
Storm Chamber	64.0 (19.52)	64.0 (19.52)	1817.5 (49880)
Storm Chamber	64.5 (19.68)	64.5 (19.68)	1831.7 (50270)
Storm Chamber	65.0 (19.83)	65.0 (19.83)	1845.9 (50660)
Storm Chamber	65.5 (19.98)	65.5 (19.98)	1860.1 (51050)
Storm Chamber	66.0 (20.13)	66.0 (20.13)	1874.3 (51440)
Storm Chamber	66.5 (20.29)	66.5 (20.29)	1888.5 (51830)
Storm Chamber	67.0 (20.44)	67.0 (20.44)	1902.7 (52220)
Storm Chamber	67.5 (20.59)	67.5 (20.59)	1916.9 (52610)
Storm Chamber	68.0 (20.74)	68.0 (20.74)	1931.1 (53000)
Storm Chamber	68.5 (20.90)	68.5 (20.90)	1945.3 (53390)
Storm Chamber	69.0 (21.05)	69.0 (21.05)	1959.5 (53780)
Storm Chamber	69.5 (21.20)	69.5 (21.20)	1973.7 (54170)
Storm Chamber	70.0 (21.35)	70.0 (21.35)	1987.9 (54560)
Storm Chamber	70.5 (21.51)	70.5 (21.51)	2002.1 (54950)
Storm Chamber	71.0 (21.66)	71.0 (21.66)	2016.3 (55340)
Storm Chamber	71.5 (21.81)	71.5 (21.81)	2030.5 (55730)
Storm Chamber	72.0 (21.96)	72.0 (21.96)	2044.7 (56120)
Storm Chamber	72.5 (22.12)	72.5 (22.12)	2058.9 (56510)
Storm Chamber	73.0 (22.27)	73.0 (22.27)	2073.1 (56900)
Storm Chamber	73.5 (22.42)	73.5 (22.42)	2087.3 (57290)
Storm Chamber	74.0 (22.57)	74.0 (22.57)	2101.5 (57680)
Storm Chamber	74.5 (22.73)	74.5 (22.73)	2115.7 (58070)
Storm Chamber	75.0 (22.88)	75.0 (22.88)	2129.9 (58460)
Storm Chamber	75.5 (23.03)	75.5 (23.03)	2144.1 (58850)
Storm Chamber	76.0 (23.18)	76.0 (23.18)	2158.3 (59240)
Storm Chamber	76.5 (23.34)	76.5 (23.34)	2172.5 (59630)
Storm Chamber	77.0 (23.49)	77.0 (23.49)	2186.7 (60020)
Storm Chamber	77.5 (23.64)	77.5 (23.64)	2200.9 (60410)
Storm Chamber	78.0 (23.80)	78.0 (23.80)	2215.1 (60800)
Storm Chamber	78.5 (23.95)	78.5 (23.95)	2229.3 (61190)
Storm Chamber	79.0 (24.10)	79.0 (24.10)	2243.5 (61580)
Storm Chamber	79.5 (24.25)	79.5 (24.25)	2257.7 (61970)
Storm Chamber	80.0 (24.41)	80.0 (24.41)	2271.9 (62360)
Storm Chamber	80.5 (24.56)	80.5 (24.56)	2286.1 (62750)
Storm Chamber	81.0 (24.71)	81.0 (24.71)	2300.3 (63140)
Storm Chamber	81.5 (24.86)	81.5 (24.86)	2314.5 (63530)
Storm Chamber	82.0 (25.02)	82.0 (25.02)	2328.7 (63920)
Storm Chamber	82.5 (25.17)	82.5 (25.17)	2342.9 (64310)
Storm Chamber	83.0 (25.32)	83.0 (25.32)	2357.1 (64700)
Storm Chamber	83.5 (25.47)	83.5 (25.47)	2371.3 (65090)
Storm Chamber	84.0 (25.63)	84.0 (25.63)	2385.5 (65480)
Storm Chamber	84.5 (25.78)	84.5 (25.78)	2399.7 (65870)
Storm Chamber	85.0 (25.93)	85.0 (25.93)	2413.9 (66260)
Storm Chamber	85.5 (26.08)	85.5 (26.08)	2428.1 (66650)
Storm Chamber	86.0 (26.24)	86.0 (26.24)	2442.3 (67040)
Storm Chamber	86.5 (26.39)	86.5 (26.39)	2456.5 (67430)
Storm Chamber	87.0 (26.54)	87.0 (26.54)	2470.7 (67820)
Storm Chamber	87.5 (26.69)	87.5 (26.69)	2484.9 (68210)
Storm Chamber	88.0 (26.85)	88.0 (26.85)	2499.1 (68600)
Storm Chamber	88.5 (27.00)	88.5 (27.00)	2513.3 (68990)
Storm Chamber	89.0 (27.15)	89.0 (27.15)	2527.5 (69380)
Storm Chamber	89.5 (27.30)	89.5 (27.30)	2541.7 (69770)
Storm Chamber	90.0 (27.46)	90.0 (27.46)	2555.9 (70160)
Storm Chamber	90.5 (27.61)	90.5 (27.61)	2570.1 (70550)
Storm Chamber	91.0 (27.76)	91.0 (27.76)	2584.3 (70940)
Storm Chamber	91.5 (27.91)	91.5 (27.91)	2598.5 (71330)
Storm Chamber	92.0 (28.07)	92.0 (28.07)	2612.7 (71720)
Storm Chamber	92.5 (28.22)	92.5 (28.22)	2626.9 (72110)

