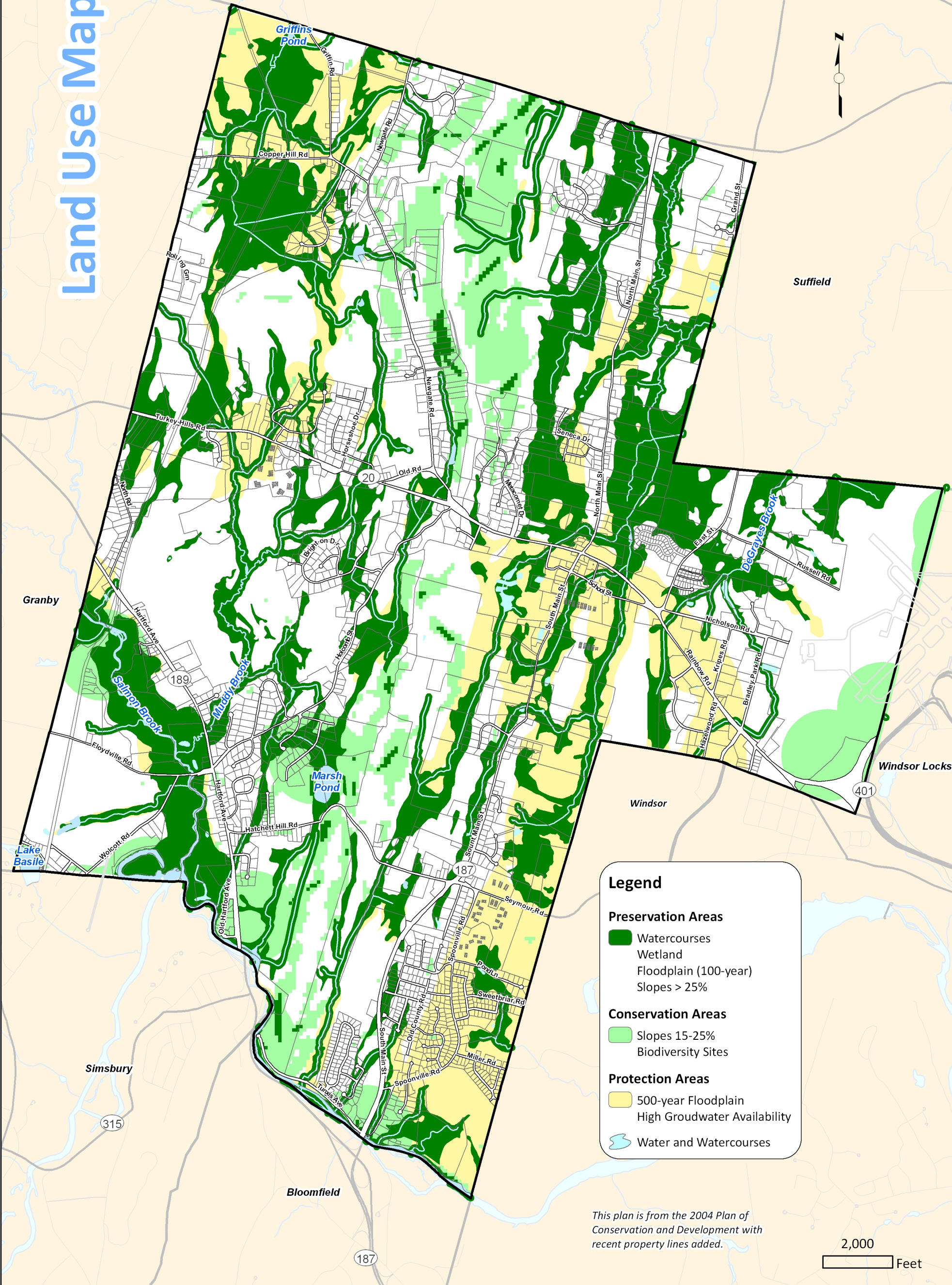




# Natural Resources Plan

Land Use Maps



**Legend**

**Preservation Areas**

- Watercourses
- Wetland
- Floodplain (100-year)
- Slopes > 25%

**Conservation Areas**

- Slopes 15-25%
- Biodiversity Sites

**Protection Areas**

- 500-year Floodplain
- High Groudwater Availability
- Water and Watercourses

*This plan is from the 2004 Plan of Conservation and Development with recent property lines added.*

