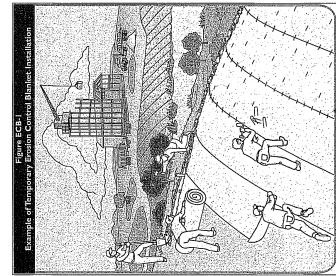




**RESPONSIBLE PERSON FOR MAINTENANCE OF SEDIMENT AND EROSION CONTROL MEASURES:**  
 Amanda Thompson  
 East Granby Land Trust  
 651-428-2059

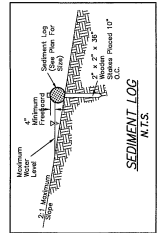
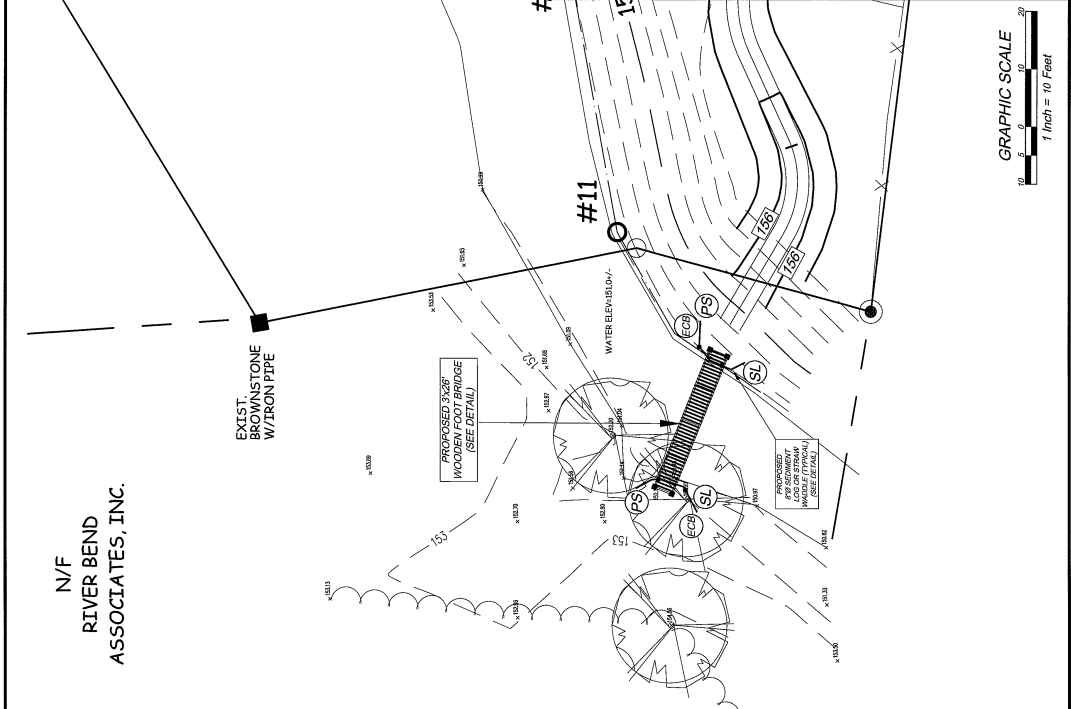
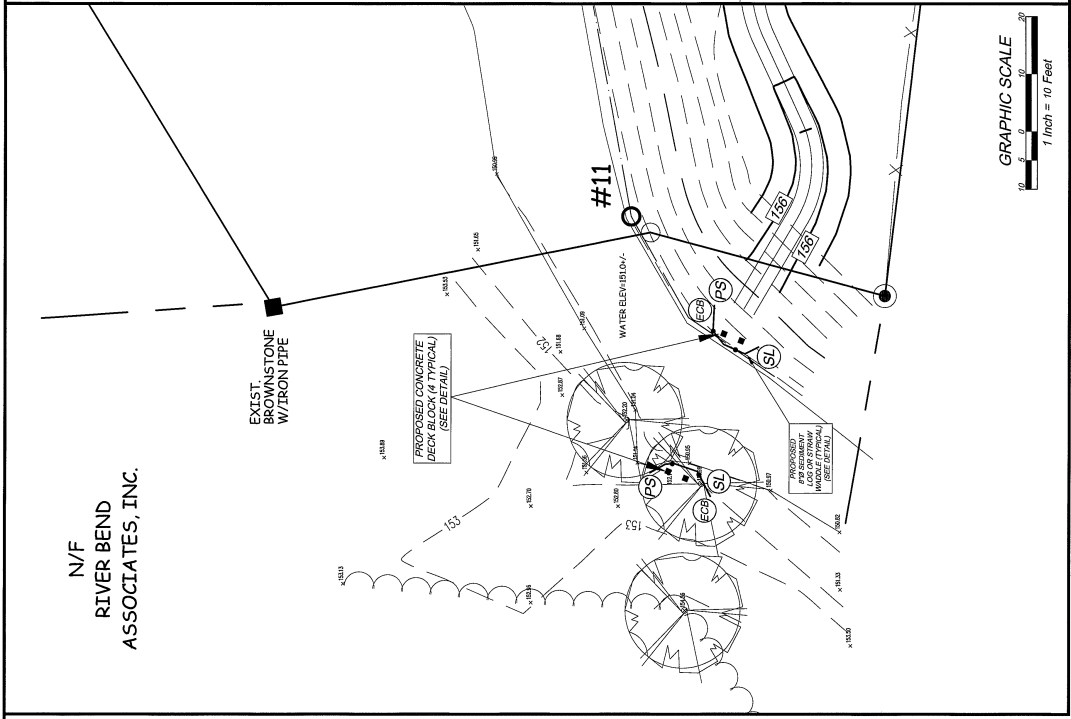
**Construction Sequence**

1. Call Before You Dig: 1-800-952-4455 or 811.
2. Obtain a copy of the Construction Erosion Control Plan from the appropriate representatives from the Town of East Granby and the East Granby Land Trust to discuss proper planning, installation of erosion control measures and maintenance.
3. Install erosion and sedimentation control measures as shown on plans.
4. Notify representative from the Town of East Granby for site review prior to construction.
5. Check back location shall be topped with 18" MC washed stone and non-woven filter fabric. (Minimum 2" minimum depth of 1/2" crushed stone)
6. Place proposed concrete deck blocks on crushed stone pads.
7. Install permanent seed and erosion control blankets to immediately stabilize disturbed areas. Seed shall be New England Wetlands Seed Admix.
8. Install proposed foot bridge.
9. Maintain all erosion & sedimentation control measures until the site is stabilized with a permanent vegetative cover.
10. Notify representative from the Town of East Granby for site review and approval of the Town of Granby staff.
11. Remove erosion controls upon final stabilization.



**Maintenance of Erosion and Sediment Controls**

1. **Permanent Seeding (PS)**  
 Inspect the sediment log at least once a week and within 24 hours of the end of a storm with a rainfall amount of 0.5 inch or greater during the first growing season. Repair eroded areas as needed to control erosion with existing erosion controls or add additional erosion controls.
2. **Soil Stabilization (SS)**  
 Inspect the sediment log at least once a week and within 24 hours of the end of a storm with a rainfall amount of 0.5 inch or greater. Inspect erosion control blankets at least once a week and within 24 hours of the end of a storm with a rainfall amount of 0.5 inches or greater for failures. Reinstall the blankets as necessary and repair any failures.
3. **Sediment Log (SL)**  
 Inspect the sediment log at least once a week and within 24 hours of the end of a storm with a rainfall amount of 0.5 inch or greater. Inspection of sediment log prior to storm with a rainfall amount of 0.5 inch or greater is recommended.
4. **Erosion Control Blanket (ECB)**  
 Inspect erosion control blankets at least once a week and within 24 hours of the end of a storm with a rainfall amount of 0.5 inches or greater for failures. Reinstall the blankets as necessary and repair any failures.



**NOTE:** LOCATIONS OF UNDERGROUND UTILITIES DEPICTED HEREON ARE BASED UPON COMPANIES AND GOVERNMENTAL AGENCIES AS NOTED UNDER MAP REFERENCES AND MANHOLES. TOGETHER WITH RECORD DRAWINGS OBTAINED FROM ALL UTILITIES, OTHER UTILITIES MAY ALSO EXIST UNKNOWING TO THE SURVEYOR. THE SIZE, LOCATION AND DEPTH OF ANY UTILITIES NOT SHOWN ON THESE PLANS SHALL BE THE CONTRACTOR'S RESPONSIBILITY TO VERIFY PRIOR TO CONSTRUCTION. CALL BEFORE YOU DIG (800) 482-4455.

**DUFOUR SURVEYING LLC**

TO BE MAINTAINED AND REPAIRED, THIS MAP IS INTENTIONALLY PREPARED IN ACCORDANCE WITH THE MAP AND SURVEY WORK ACT. THE SURVEYOR'S LIABILITY IS LIMITED TO THE STATEMENT OF WORK AND THE STATEMENT OF ACCURACY OF SURFACE AND WORK SHOWN HEREON. THE SURVEYOR IS NOT RESPONSIBLE FOR THE CONSTRUCTION OF ANY STRUCTURES, UTILITIES OR OTHER WORK SHOWN ON THESE PLANS.

CONTRACT NO. 2023-08  
 PROJECT NO. 23-19  
 DATE: 11-24-2023

APPROVED: CHARLIE J. MATASOJA - L.S. #70219  
 EAST GRANBY, CONNECTICUT

PROVIDED FOR: EAST GRANBY LAND TRUST  
 845 HARTFORD AVENUE  
 EAST GRANBY, CONN.  
 FILE NO. 23-19

860-314-5682

**PROPOSED FOOT BRIDGE SITE PLAN**

GRAPHIC SCALE  
 1 Inch = 10 Feet