



CONSTRUCTION SPECIFICATIONS

1. Call before You Dig 1-800-922-4455 or 811.
2. Hold an orientation meeting with Contractor, Design Engineer, and the appropriate representatives from the Town of East Granby and the East Granby Fire Department. The meeting shall discuss the location of erosion control measures, and maintenance.
3. Install erosion and sedimentation control measures as shown on plans.
4. Notify representatives from the Town of East Granby for site review prior to further construction.
5. Excavate for piles at 4 locations. Material shall be stockpiled in locations shown on plans. (Not within 10-foot setback).
6. Install preferred form material for piles and pour concrete.
7. Once concrete has set, backfill excavation with stockpiled material.
8. Excess material shall be evenly spread in wooded areas where knowledge will meet existing grade.
9. Install permanent seed and mulch control blanket to immediately stabilize disturbed areas.
10. Install proposed fence bridge.
11. Maintain all erosion & sedimentation control measures until the site is stabilized with a permanent vegetative cover.
12. Add erosion & sedimentation control measures per the Design Engineer's recommendations.
13. Remove erosion controls upon final stabilization.

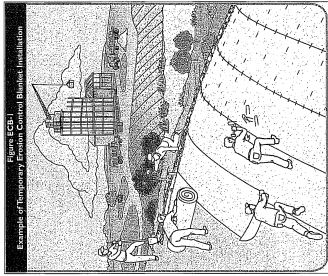
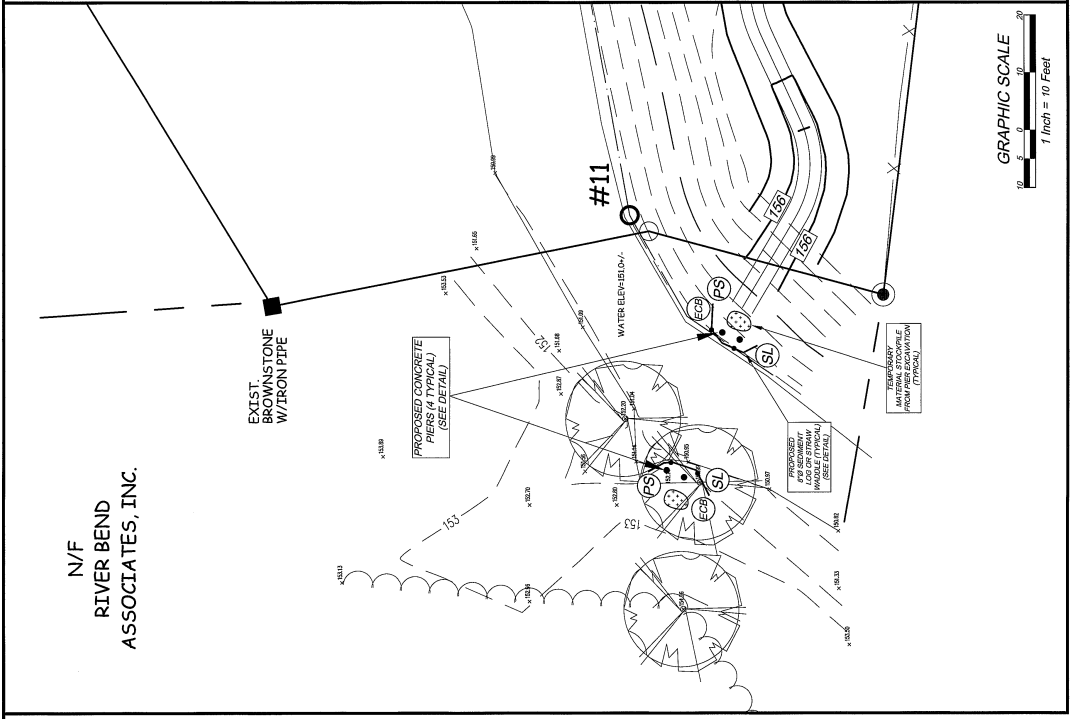
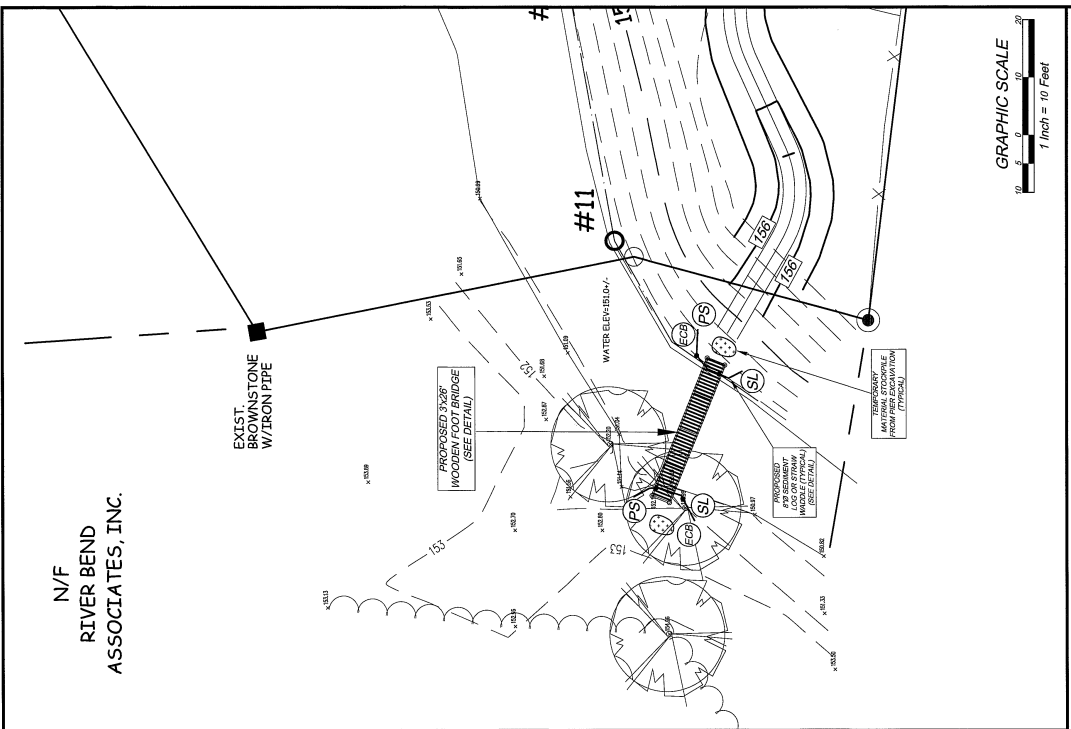


Figure ECH-1
Example of Temporary Erosion Control Blanket Installation

Maintenance of Erosion and Sediment Control

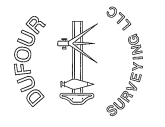
1. **Permanent Seeding (PS)**
Inspect the sediment log at least once a week and within 24 hours of the end of a storm with a rainfall amount of 0.5 inch or greater during the first growing season. Repair eroded areas as needed to control erosion with existing erosion control or add additional erosion controls.
2. **Mulch (M)**
Apply mulch to protect soil surface and promote the establishment of seeding. See Maintenance Notes for inspection requirements.
3. **Sediment Log (SL)**
Inspect the sediment log at least once a week and within 24 hours of the end of a storm with a rainfall amount of 0.5 inch or greater. Inspection of sediment log prior to maintenance.
4. **Erosion Control Blanket (ECB)**
Inspect erosion control blanket at least once a week and within 24 hours of the end of a storm with a rainfall amount of 0.5 inches or greater for failures. Re-install the blanket as necessary until rains stop to subside.



GRAPHIC SCALE
1 Inch = 10 Feet

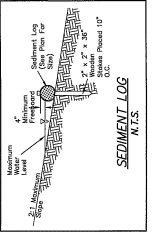
GRAPHIC SCALE
1 Inch = 10 Feet

PROPOSED FOOT BRIDGE SITE PLAN			
PREPARED FOR:	EAST GRANBY LAND TRUST		
PREPARED BY:	SEYMOUR ELEMENTARY SCHOOL, 300 HARTFORD AVENUE, EAST GRANBY, CONN.		
SCALE:	1"=10'	APPROVED:	CHARNE J. MATRASKA - L.S. #2019
DATE:	11-24-2022	JOB NO.:	22-48
		FILE NO.:	132-48
		DRAWN BY:	DEBRA SIKORSKI, LLC
		PROJECT ADDRESS:	575 NORTH MAIN STREET
		PHONE:	860-314-0522
		FAX:	860-338-2222



TO MY KNOWLEDGE AND BELIEF, THIS MAP IS SUBSTANTIALLY CORRECT AS NOTED HEREIN. THIS MAP AND SURVEY WORK PREPARED IN ACCORDANCE WITH THE STANDARDS OF PRACTICE AND STANDARDS OF ACCURACY OF SURVEY AND MAPS, AS SET FORTH BY THE PROFESSIONAL SURVEYORS AND MAPPING ASSOCIATION OF CONNECTICUT.

CHARNE J. MATRASKA - L.S. # 2019
NOT VALID WITHOUT PROPER SEAL.



UTILITY NOTES:
LOCATION OF UNDERGROUND UTILITIES DEPICTED HEREON ARE BASED UPON MANHOLES, TAGS WITH RECORD DRAWING OBTAINED FROM UTILITY COMPANIES. THESE LOCATIONS MUST BE VERIFIED BY FIELD SURVEY. IN ADDITION, OTHER UTILITIES MAY EXIST. UNKNOWN TO THE SURVEYOR. THE SIZE AND DEPTH OF UTILITIES SHOULD BE DETERMINED BY THE CONTRACTOR PRIOR TO CONSTRUCTION. CALL BEFORE YOU DIG 1-800-922-4455.